



Craig Hane, Ph.D., Founder

Tier 5: Part 2a – INTEGRAL CALCULUS

1.1	<i>Lessons Abbreviation Key Table</i>	3
1.2	<i>Exercises Introduction</i>	3
C13 LESSON: Integral Calculus Overview		5
C13E		9
C13EA.....		11
C14 LESSON: Definition of Integral and the FTC		12
C14E		17
C14EA.....		18
C15 LESSON: Techniques of Integration		20
C15E		25
C15EA.....		26
C16 LESSON: Applications of Integration - Areas		32
C16E		37
C16EA.....		38
C17 LESSON: Applications of Integration – Arc Length		45
C17E		49
C17EA.....		50
C18 LESSON: Applications of Integration – Volume – Disc Method		56

<i>C18E</i>	60
<i>C18EA</i>	61
C19 LESSON: Applications of Integration – Volume – Shell Method	73
<i>C19E</i>	77
<i>C19EA</i>	78
C20 LESSON: Applications of Integration – Surface of Revolution	92
<i>C20E</i>	96
<i>C20EA</i>	97
C21 LESSON: Parametric Functions	107
<i>C21E</i>	111
<i>C21EA</i>	112

1.1 Lessons Abbreviation Key Table

C = Calculus Lesson

The number following the letter is the Lesson Number.

E = Exercises with Answers: Answers are in brackets [].

EA = Exercises Answers: (only used when answers are not on the same page as the exercises.)

ES = Exercises Supplemental: Complete if you feel you need additional problems to work.

1.2 Exercises Introduction

Why do the Exercises?

Mathematics is like a "game." The more you practice and play the game the better you will understand and play it.

The Foundation's Exercises, which accompany each lesson, are designed to reinforce the ideas presented to you in that lesson's video.

It is unlikely you will learn math very well by simply reading about it or listening to Dr. Del, or anyone else, or watching someone else doing it.

You WILL learn math by "doing math."

It is like learning to play a musical instrument, or write a book, or play a sport, or play chess, or cooking.

You will learn by practice.

Repetition is the key to mastery.

You will make mistakes. You will sometimes struggle to master a concept or technique. You may feel frustration sometimes **“WE ALL DO.”**

But, as you learn and do math, you will begin to find pleasure and enjoyment in it as you would in any worthwhile endeavor. Treat it like a sport or game.

These exercises are the KEY to your SUCCESS!

ENJOY!

C13 LESSON: Integral Calculus Overview

Calculus consists of two concepts, Derivative and Integral.

We have already studied the Derivative, or Differential Calculus.

Now we will study the Integral, or Integral Calculus.

What kind of problems will Integral Calculus address?

What we might call “accumulation” problems.

For example, the Area of a two dimensional object, or the Volume or Surface Area of a three dimensional object.

Our pre-calculus ancestors were able to calculate the areas and volumes of some common geometric objects, which we studied in Geometry in Tiers 2, 3, and 4. But, these studies were limited to some very special cases.

In STEM subjects we must be able to calculate areas and volumes of a much broader class of objects.

Example 1. What would be the area under a parabola in the figure below? Or of an ellipse?

Archimedes figured out the parabola. Can you?

What about the ellipse?

Example 2. What about the area under a circle bounded by two vertical lines from a diameter? (You draw it)

Example 3. What about the area under the sine curve?

Example 4. What about the volume or surface area of a paraboloid, i.e. a surface where a parabola is rotated about its axis. This is how many "dish" receivers are made.

Example 5. What about the arc length of a curve?

Many of these examples are easily solved with integral calculus. How?

An irony is that one key to their solution is to use what are called anti-derivatives, which of course we get from derivatives. This is what our ancestors discovered and used for three hundred years.

Indeed, this discovery is called the Fundamental Theorem of Calculus, and one can argue that all of modern technology grew from this discovery.

All that changed with the invention of a computer. Now, if you have access to a computer you can get very accurate estimates by brute force using a computer.

Ironically, today with a tool like WA you can solve these problems both ways as you will learn.

First, you will learn the definition of “Integral” from a geometric viewpoint.

Second, you will learn how to use the Fundamental Theorem of Calculus like our ancestors did and then to utilize WA to evaluate any integral.

Finally, you will learn how WA can calculate the value of any integral to a high degree of accuracy by brute force that would be impractical for a human to do manually, even with a calculator.

Today it is pretty easy to learn the basic calculus concepts and how to use a tool like Wolfram Alpha to solve any calculus problem.

There are many applications of integrals in virtually all subjects in science and engineering and any other quantitative field.

If you go into a STEM field you will be finding examples in a never ending way. There are an unlimited number of examples.

Many of the integral calculus tools our ancestors developed and used are now effectively obsolete in that no employer would pay you to use these “manual tools” to solve a calculus problem.

These tools are still taught in typical calculus courses and covered in typical calculus textbooks. You may learn them if you like. And then, you may always check your work easily and quickly with Wolfram Alpha.

A modern calculus textbook will be a good source of problems and applications of both differential and integral calculus.

You may solve the problems with the classical manual techniques if you like or simply use Wolfram Alpha.

It is imperative you learn to use a tool like Wolfram Alpha since this is what any modern STEM professional uses.

Wolfram Alpha makes the application of calculus 90% easier than the old classical approach.

This, in turn, makes it easier to understand the concepts of calculus and their applications.

C13E

Integral Calculus Overview

1. What kind of problems does integral calculus address?
2. Name two types of problems integral calculus can help with?
3. Integrals are also called what?
4. What does the Fundamental Theorem of Calculus do?

1. What kind of problems does integral calculus address?
[Accumulation problems]
2. Name two types of problems integral calculus can help with?
[The area of a two dimensional object, or the volume or surface area of a three dimensional object.]
3. Integrals are also called what?
[Anti-derivatives]
4. What does the Fundamental Theorem of Calculus do?
[It links the concept of the derivative of a function with the concept of the integral of a function.]

C14 LESSON: Definition of Integral and the FTC

Definition of Integral.

Let $y = f(t)$ be a continuous function and $a < x$

$F(x)$ = the area under the graph of f from a to x .

Notation: $F(x) =$

Fundamental Theorem of Calculus (FTC) I.

$$F'(x) = f(x)$$

F is called an anti-derivative of f .

Corollary: The area under the graph of the function f from a to b for $a < b$ is $F(b) - F(a)$

Area under f from a to $b = F(b) - F(a) =$

Demo of FTC

Let h be an infinitesimal

$$F(x + h) - F(x) \approx f(x)h$$

$$(F(x + h) - F(x))/h \approx f(x)$$

$$F'(x) = \text{Std}[(F(x + h) - F(x))/h] = f(x)$$

This Demo can be made quite rigorous.

Why is this important?

Lemma 1. If for all x , $H(x) = C$, the $H'(x) = 0$ for all x .

Proof: $H'(x) = \lim_{h \rightarrow 0} \frac{H(x+h) - H(x)}{h} = \lim_{h \rightarrow 0} \frac{0}{h} = 0$

Lemma 2. If $H(x)$ is continuous and $H'(x) = 0$ for all x , then $H(x) = C$ for some constant C .

Proof: This can be proven rigorously, but heuristically we see the Graph of H is flat for all x and thus it can never increase or decrease for any x and , thus it is always constant for some number C .

Lemma 3. If $F'(x) = G'(x) = f(x)$ for all x , then

$F(x) = G(x) + C$, for some constant C , for all x .

Proof: $(F - G)'(x) = F'(x) - G'(x) = 0$

Thus, $(F - G)(x) = C$ for some constant C ,

Thus $F(x) - G(x) = C$ or $F(x) = G(x) + C$

What is the significance of these three Lemmas?

Well suppose we somehow can find an antiderivative G of the function f .
 $G'(x) = f(x)$

From Lemma 3 we now know that $F(x) = G(x) + C$ for some constant C .

We also know that $0 = F(a) = G(a) + C$, or $C = -G(a)$

So we now get

Fundamental Theorem of Calculus (FTC II)

Area under $y = f(t)$ from a to $b = G(b) - G(a)$

So this means that if we can somehow find an antiderivative $F(t)$ of $f(t)$ then we can calculate the area under the graph of f from a to b by just evaluating this antiderivative at a and b and subtracting.

Sometimes finding an antiderivative $F(t)$ for $f(t)$ is easy. Certainly, if we know $F'(t) = f(t)$ for some F , the F is the antiderivative of f .

So for example $-\cos(t)$ is the antiderivative of $\sin(t)$ since we know the derivative of $-\cos(t)$ is $\sin(t)$.

Unfortunately, finding an antiderivative for many functions $f(t)$ is very difficult, and sometimes impossible in terms of any familiar functions.

Finding these antiderivatives is part of what is called "techniques of integration", and it is the reason Integral Calculus has classically been so difficult.

Fortunately, WA will find these antiderivatives for you in virtually all cases.

WA antiderivative $\sin(x)$ Answer: $-\cos(x) + C$

WA derivative $-\cos(x)$ Of course

Notice: an antiderivative $F(x)$ of a function $f(x)$ is also called an indefinite integral of $f(x)$.

WA integrate $\sin(x)$

WA indefinite integral $\sin(x)$

WA integrate $\sin(x)$ from $x = 1$ to 3

Also gives you the definite integral from 1 to 3 , and thus the net area under the graph of $\sin(x)$.

Example 1: We know the derivative of $-\cos(x)$ is $\sin(x)$

or an antiderivative of $\sin(x)$ is $-\cos(x)$

So we can calculate the area under the sine curve from

.1 to 1.45 as $-\cos(1.45) - (-\cos(.1)) = .874501$

Of course, WA gives this quickly too.

WA Integrate $\sin(x)$ from .1 to 1.45

Example 2: We know that the derivative of $(1/3)x^3 = x^2$

So an antiderivative of $x^2 = (1/3)x^3$ is

So the area under the parabola x^2 from $x = 1.5$ to 3.2 is

$(1/3)3.2^3 - (1/3)1.5^3 = 9.79767$

Check with WA.

WA Integrate x^2 from $x = 1.5$ to 3.2

Example 3: Find the area under the upper semicircle of radius 5 centered at the origin from $x = -2$ to 2

The equation of the circle is $x^2 + y^2 = 25$

So, $y = (25 - x^2)^{1/2}$ is the function whose graph is the upper semicircle.

So all we have to do is find an anti-derivative of this function and apply the FTC!

Oops!. Easier said, than done. Do you know one?

Can you find one? Pause and try it.

Well, if you are clever enough and/or have learned some "techniques of integration" you will find that an anti-derivative is:

$$(x/2)(25 - x^2)^{1/2} + (25/2)\sin^{-1}(x/5)$$

Area =

$$\begin{aligned} & (21)^{1/2} + 12.5\sin^{-1}(2/5) - [- (21)^{1/2} + 12.5\sin^{-1}(-2/5)] \\ &= 2[(21)^{1/2} + 12.5\sin^{-1}(2/5)] \quad \text{since } \sin^{-1}(.4) = -\sin^{-1}(-.4) \\ &= 19.453 \end{aligned}$$

Now, in the old days a student would either find this anti-derivative using some technique of integration, or finding it in a table of anti-derivatives, or indefinite integrals.

Either way, it was quite a chore. Many students would give up in frustration. What a way to spend one's time. But, there was no choice until tools like WA were invented.

Even after finding an anti-derivative, and assuming you had not made a mistake there, it was quite a chore calculating the final answer. Slide rules and tables of logarithms and trig tables were often necessary too. Again, very easy to make a careless error, so work had to be checked and errors rooted out. All in all, it was a very labor intensive process.

Check the WA answer.

WA Integrate $(25 - x^2)^{.5}$ from $x = -2$ to 2

WOW! What do you think?

C14E

Definition of Integral and the FTC

1. If you are given a function $f(x)$, and $F(x)$ is defined to be the area under the graph of $f(t)$ from $t = a$ to $t = x$, then what is $F(x)$ called?
2. What is Part I of the Fundamental Theorem of Calculus (FTC)?
3. If you are given a function $f(x)$, graphed from a to b , what is the notation for the area under the graph using the definition of $F(x)$ from Q1?
4. An anti-derivative is also called what, and why?
5. What is a definite integral?
6. Given the function $f(x) = \cos(2x)^2$, what is the anti-derivative and what is the area from $x = 0.2$ to 0.4 ?
7. Given the function $f(x) = 1/3(2x^2 - 3x)^2$, what is the anti-derivative and what is the area from $x = 0.5$ to 1.4 ?

Note: When you just find the antiderivative or indefinite integral of $f(x)$, then Wolfram Alpha also gives you its graph and not the graph of $f(x)$.

But, when you find the definite integral of $f(x)$ Wolfram Alpha now gives you the graph of $f(x)$ from a to b and not the graph of $F(x)$ the antiderivative.

8. Given the function $f(x) = -\sin(x) - 3x^3$, what is the area from $x = 0$ to 1.75 ?
9. Given the function $f(x) = \cos(2x)^3$, what is the area from $x = 0$ to $\pi/2$?
10. Find the area under the upper semicircle of radius 7 centered at the origin from $x = -3$ to 3 . The function whose graph is the upper semicircle is $f(x) = (49 - x^2)^{1/2}$.

C14EA

Definition of Integral and the FTC Answers: []'s

1. If you are given a function $f(x)$, and $F(x)$ is defined to be the area under the graph of $f(t)$ from $t = a$ to $t = x$, then what is $F(x)$ called?
[The integral of $f(t)$ from $t = a$ to $t = x$, and also by the FTC if is an anti-derivative of $f(x)$.]

2. What is Part I of the Fundamental Theorem of Calculus (FTC)?
[$F'(x) = f(x)$]

3. If you are given a function $f(x)$, graphed from a to b , what is the notation for the area under the graph using the definition of $F(x)$ from Q1?
[$F(b)$ or $F(b) - F(a)$ But, of course, $F(a) = 0$]

4. An anti-derivative is also called what, and why?
[An indefinite integral, because it has no upper or lower limits]

5. What is a definite integral?
[An integral that has upper and lower limits]

6. Given the function $f(x) = \cos(2x)^2$, what is the anti-derivative and what is the area from $x = 0.2$ to 0.4 ?
[WA integrate $\cos(2x)^2$

$$\int \cos^2(2x) dx = \frac{1}{8} (4x + \sin(4x)) + \text{constant}$$

WA integrate $\cos(2x)^2$ from $x = 0.2$ to 0.4

Area = 0.135277]

7. Given the function $f(x) = \frac{1}{3}(2x^2 - 3x)^2$, what is the anti-derivative and what is the area from $x = 0.5$ to 1.4 ?
[WA integrate $\frac{1}{3}(2x^2 - 3x)^2$

$$\int \frac{1}{3} (2x^2 - 3x)^2 dx = \frac{4x^5}{15} - x^4 + x^3 + \text{constant}$$

WA integrate $\frac{1}{3}(2x^2 - 3x)^2$ from $x = 0.5$ to 1.4

Area = 0.265764]

Note: When you just find the antiderivative or indefinite integral of $f(x)$, then Wolfram Alpha also gives you its graph and not the graph of $f(x)$.

But, when you find the definite integral of $f(x)$ Wolfram Alpha now gives you the graph of $f(x)$ from a to b and not the graph of $F(x)$ the antiderivative.

8. Given the function $f(x) = -\sin(x) - 3x^3$, what is the area from $x = 0$ to 1.75?

[WA integrate $-\sin(x) - 3x^3$

$$\int (-\sin(x) - 3x^3) dx = \cos(x) - \frac{3x^4}{4} + \text{constant}$$

WA integrate $-\sin(x) - 3x^3$ from $x = 0$ to 1.75

Area = -8.21243]

9. Given the function $f(x) = \cos(2x)^3$, what is the area from $x = 0$ to $\pi/2$?

[WA integrate $\cos(2x)^3$

$$\int \cos^3(2x) dx = \frac{1}{24} (9 \sin(2x) + \sin(6x)) + \text{constant}$$

WA integrate $\cos(2x)^3$ from $x = 0$ to $\pi/2$

Area=0]

10. Find the area under the upper semicircle of radius 7 centered at the origin from $x = -3$ to 3. The function whose graph is the upper semicircle is $f(x) = (49 - x^2)^{1/2}$.

[WA integrate $(49 - x^2)^{1/2}$

$$\int \sqrt{49 - x^2} dx = \frac{1}{2} \left(\sqrt{49 - x^2} x + 49 \sin^{-1} \left(\frac{x}{7} \right) \right) + \text{constant}$$

WA integrate $(49 - x^2)^{1/2}$ from $x = -3$ to 3

Area=40.676]

C15 LESSON: Techniques of Integration

An indefinite integral $F(x) = \int f(x)dx$ is an anti-derivative of $f(x)$.

A definite integral of $f(x)$ from a to b is $F(b)-F(a)$.

How to calculate this definite integral is the question.

I. Brute Force

Conceptually, an integral is very simple geometrically and arithmetically.

It is simply the sum of a bunch of rectangles to be summed up. $f(x)dx$ indicates this in the integral notation. $f(x)$ is the length and dx is the width. Add them all up!

Divide (a,b) into n equal sub-intervals

$$a = a_0, a_1, a_2, a_3, \dots, a_n = b$$

The length of each subinterval is

$$(b - a)/n = \Delta n$$

Calculate $f(a_i + \Delta n/2)$ for each $i = 0$ to $n-1$

Integral of $f(x)$ from a to b

$$\approx \text{Sum}[f(a_i + \Delta n/2) \Delta n] \quad i = 0, \dots, n-1$$

Now it's just an arithmetic problem.

The larger n , the more accurate the value.

Remember, in any practical STEM calculation, there is always an error term.

This method was quite impractical for our ancestors, with just pencil and paper, even with logarithms, trig tables, and slide rules.

It simply took too long and was error prone and required many redundant calculations to check.

But, with a computer, this is a trivial calculation.

So, up until about 50 years ago, our ancestors had to rely on other techniques.

II. Use the Fundamental Theorem of Calculus

This is easy IF you can find an anti-derivative for $f(x)$

Otherwise, the FTC doesn't help.

Well, taking derivatives is pretty easy and algorithmic. So our ancestors made up very elaborate tables of derivatives.

Then working the tables backward one had anti-derivatives. These were called tables of (indefinite) integrals. They were extensive and compiled with an immense amount of labor by many mathematicians over many decades, even centuries.

After all, the FTC was discovered in the 1600's. It was the "open sesame" to calculating definite integrals, which one must do for virtually all STEM subjects.

The FTC spawned the industrial revolution. Modern civilization is based on it.

Mathematicians like Euler and many others compiled very extensive tables of integrals. In fact, it was still quite challenging to find a desired anti-derivative in these extensive tables. But, it was often the only practical way to find an anti-derivative.

Calculus books were written to take full advantage of the FTC for evaluating integrals.

Many "techniques of integration" were devised to find these anti-derivatives. These were a collection of ad-hoc techniques that were difficult to master and remember.

One would need to spend a great deal of time learning and practicing these techniques to become even marginally proficient.

These techniques were responsible for many students giving up on learning math and abandoning a STEM career.

And, worse yet, there were many functions that simply did not have anti-derivatives represented by the common functions everyone understood.

This led to the definitions of many new Special Functions, whose definitions were essentially given by the integrals of certain functions.

Example: What is the anti-derivative of $\sin(x^2)$?

It is easy to find an anti-derivative of $x\sin(x^2)$ using the techniques taught in a calculus textbook. It is $-.5\cos(x^2)$

So this could be put on a test for calculus.

But, try as hard as you like NONE of the techniques of integration taught in any calculus textbook will yield an anti-derivative for $\sin(x^2)$.

In fact, this anti-derivative is given a name, it is the Special Function called a Fresnel Integral. There are then tables of values for this Fresnel Integral, so you can evaluate the integral of $\sin(x^2)$!

WA **integrate $x\sin(x^2)$**

WA **Integrate $\sin(x^2)$**

WA **Plot $\sin(x^2)$**

WA **integrate $\sin(x^2)$ from -1 to 1**

Our calculus textbooks were developed in the late 1800's and evolved throughout the 20th century.

In addition to these techniques of integration, in the 20th Century, calculus textbook authors felt a necessity to introduce rigorous arguments and "proofs" into these calculus textbooks too. This made the learning of calculus even more difficult for most students.

Many engineers and scientists, and non-mathematicians, would skip the rigor, but they could not escape the techniques of integration using anti-derivatives and the FTC. There simply wasn't a better way.

There were extensive tables of antiderivatives or indefinite integrals compiled that made it somewhat easier to find antiderivatives. But, even these could be challenging to use. You often had to transform a function of interest into another form to find your antiderivative.

There was simply no easy way to find antiderivatives for real world functions. Thus, integration was difficult.

III. Use a polynomial approximation or infinite series representation of a function.

Then one could easily find an anti-derivative since it is very easy, for anyone, to find the anti-derivative of a polynomial.

Furthermore, it is possible to find such a representation of virtually any function using what is called a Taylor Series expansion of the function. But, this is time consuming, and sometimes very difficult too.

Our early ancestors utilized the generalized Binomial Theorem to obtain a polynomial representation of many functions. Isaac Newton was very adept at this.

However, it turns out that it is also a very burdensome arithmetical challenge to utilize this infinite series approach too. It sometimes isn't much easier than the Brute Force Method.

Once computers became available to engineers and scientists method I., Brute Force, became very popular.

Today, (circa 2015) we have the best of both worlds thanks to Wolfram Alpha.

WA will give you the antiderivative of virtually any function, if one exists. And, then you can use this to find the definite integral. Otherwise, it simply utilizes Brute Force to calculate a definite integral. In fact, it does it all with one simple command.

Integrate $f(x)$ from $x = a$ to b .

No modern employer is going to pay an employee to use antiquated methods for finding integrals. It is simply too time consuming and error prone, and in many cases virtually impossible.

It would be like expecting a modern STEM professional to use a slide-rule, or log tables, or trig tables, to solve problems.

It's like making a student use manual algorithms and pencil and paper to do arithmetical calculations instead of using a calculator.

You need to learn to use a modern tool like Wolfram Alpha to solve such problems.

This results in a huge improvement in both Quality and Productivity.

If you are going to study a STEM subject in some school, I would ask if they will allow you to use modern tools like WA to solve calculus problems, and differential equations, and linear algebra, and many other types of math problems.

If they insist you learn antiquated, difficult, and irrelevant techniques, I would choose another school.

Unfortunately, some math departments are still mired in the old ways and might want to insist you master useless outdated techniques.

After all, teachers like to teach what they know and learned with great effort.

And, they are often forced to do so by the choice of textbooks and syllabi forced on them by their schools.

It will be your decision whether you want to comply.

Personally, I would not want to waste my valuable time and money in such a school.

At the end of this course, I will teach you a few of the tools for techniques of integration, as a historical curiosity, and perhaps help you pass some antiquated test.

C15E

Techniques of Integration

1. Given that the definite integral of $f(x)$ from a to b is $F(b)-F(a)$, what is the general form for calculating the area from a to b using the Brute Force method?
2. In the answer to Q1, what does the term Δn represent mathematically?
3. In the answer to Q2, what does n represent, and which will give you a more accurate value for your area estimation, a larger or smaller value for n ?

For the following exercises, plot the function, then find the definite integral for the range given.

4. $f(x) = x^2$ range: 0.5 to 1.0
5. $f(x) = 4x^3 - x^2$ range: 0.1 to 0.2
6. $f(x) = \cos(x^2) + \sin(x)$ range: 0 to 3
7. $f(x) = \sin(x^2) - \cos(x)$ range: -2 to 2
8. $f(x) = 4e^{x^3}$ range: 0.5 to 1.0
9. $f(x) = \ln(5x^2 + \sin(x))$ range: -4 to -2
10. $f(x) = e^x$ range: -3 to 0

C15EA

Techniques of Integration

Answers: []

1. Given that the definite integral of $f(x)$ from a to b is $F(b)-F(a)$, what is the general form for calculating the area from a to b using the Brute Force method?

$$[\text{Sum}[f(a_i + \Delta n/2) \Delta n]]$$

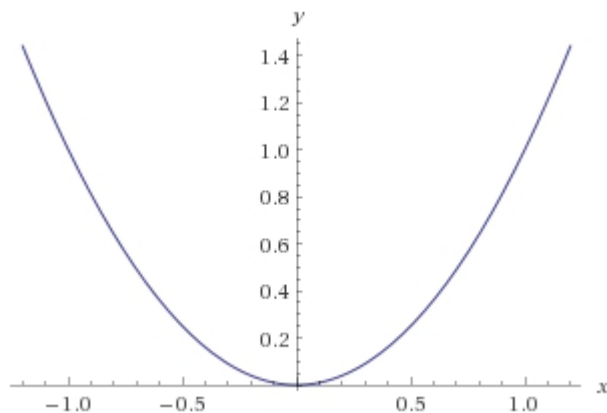
2. In the answer to Q1, what does the term Δn represent mathematically?
[$\Delta n = (b-a)/n$]

3. In the answer to Q2, what does n represent, and which will give you a more accurate value for your area estimation, a larger or smaller value for n ?

[$n =$ the number of sub-intervals between a and b . A larger value for n will give you a more accurate value.]

For the following exercises, plot the function, then find the definite integral for the range given.

4. $f(x) = x^2$ range: 0.5 to 1.0
WA plot x^2



WA integrate x^2 from $x = 0.5$ to 1

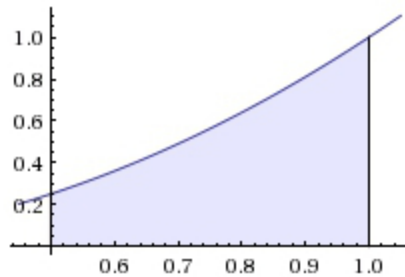
Definite integral:

$$\int_{0.5}^1 x^2 dx = 0.291667$$

Indefinite integral:

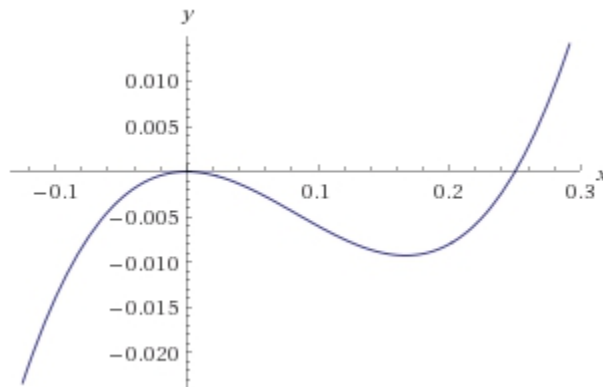
$$\int x^2 dx = \frac{x^3}{3} + \text{constant}$$

Visual representation of the integral:



5. $f(x) = 4x^3 - x^2$ range: 0.1 to 0.2

WA plot $4x^3 - x^2$



WA integrate $4x^3 - x^2$ from $x = 0.1$ to .2

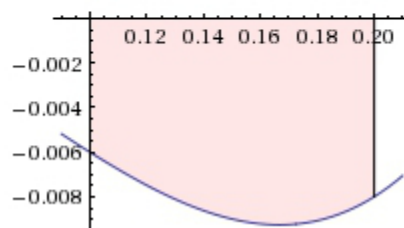
Definite integral:

$$\int_{0.1}^{0.2} (4x^3 - x^2) dx = -0.000833333$$

Indefinite integral:

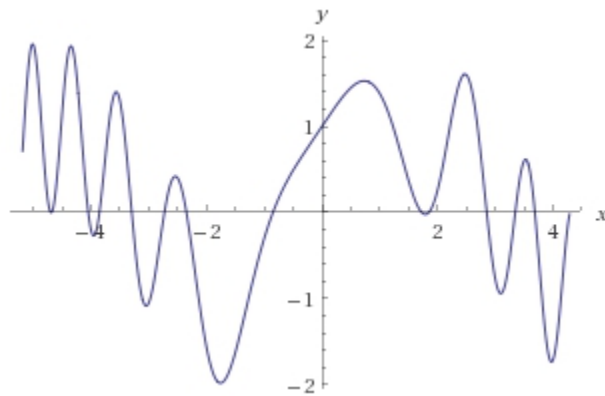
$$\int (4x^3 - x^2) dx = x^4 - \frac{x^3}{3} + \text{constant}$$

Visual representation of the integral:



6. $f(x) = \cos(x^2) + \sin(x)$ range: 0 to 3

WA plot $\cos(x^2) + \sin(x)$



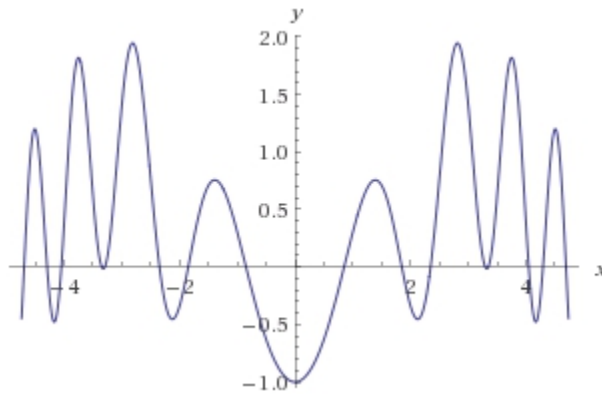
WA integrate $\cos(x^2) + \sin(x)$ from $x = 0$ to 3

Definite integral:

$$\int_0^3 (\cos(x^2) + \sin(x)) dx = \sqrt{\frac{\pi}{2}} C\left(3\sqrt{\frac{2}{\pi}}\right) + 1 - \cos(3) \approx 2.69286$$

7. $f(x) = \sin(x^2) - \cos(x)$ range: -2 to 2

WA plot $\sin(x^2) - \cos(x)$

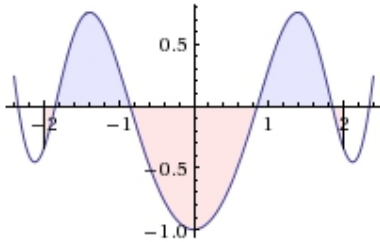


WA integrate $\sin(x^2) - \cos(x)$ from $x = -2$ to 2

Definite integral:

$$\int_{-2}^2 (\sin(x^2) - \cos(x)) dx = \sqrt{2\pi} S\left(2\sqrt{\frac{2}{\pi}}\right) - 2\sin(2) \approx -0.209042$$

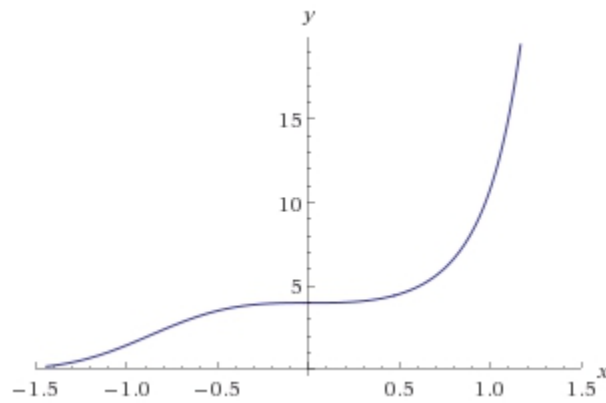
Visual representation of the integral:



8. $f(x) = 4e^{x^3}$

range: 0.5 to 1.0

WA plot $4e^{(x^3)}$

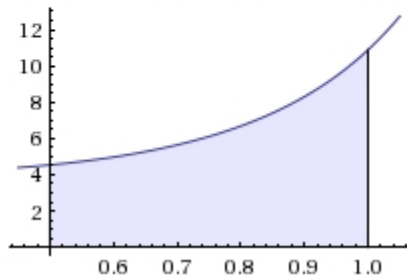


WA integrate $4e^{x^3}$ from $x = 0.5$ to 1.0

Definite integral:

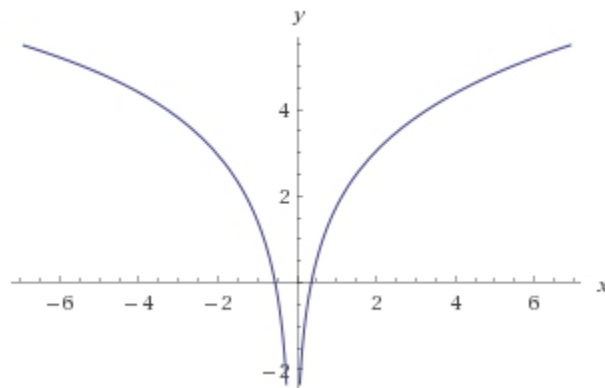
$$\int_{0.5}^1 4e^{x^3} dx = 3.30282$$

Visual representation of the integral:



9. $f(x) = \ln(5x^2 + \sin(x))$ range: -4 to -2

WA plot $\ln(5x^2 + \sin(x))$

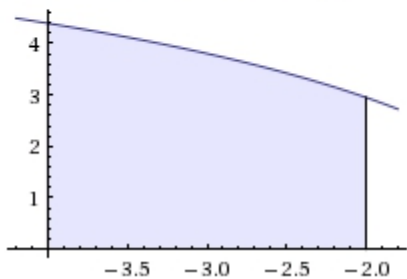


WA integrate $\ln(5x^2 + \sin(x))$ from $x = -4$ to -2

Definite integral:

$$\int_{-4}^{-2} \log(5x^2 + \sin(x)) dx = 7.52035$$

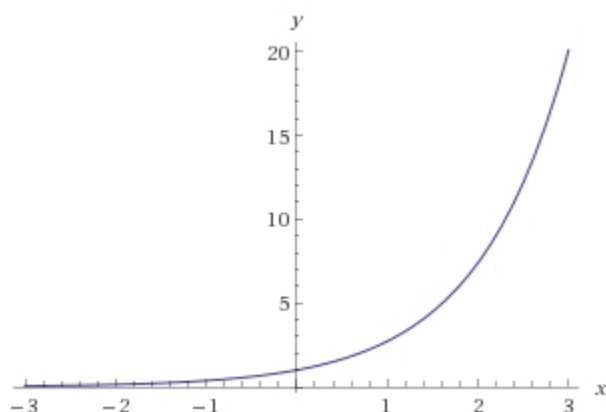
Visual representation of the integral:



10. $f(x) = e^x$

range: -3 to 0

WA plot e^x

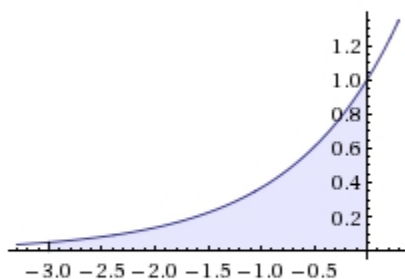


WA integrate e^x from $x = -3$ to 0

Definite integral:

$$\int_{-3}^0 e^x dx = 1 - \frac{1}{e^3} \approx 0.95021$$

Visual representation of the integral:



Riemann sums:

left sum	$\frac{3(e^3 - 1)}{e^3(e^{3/n} - 1)n} = \left(1 - \frac{1}{e^3}\right) + \frac{\frac{3}{2}e^3 - \frac{3}{2}}{n} + O\left(\left(\frac{1}{n}\right)^2\right)$
----------	---

(assuming subintervals of equal length)

C16 LESSON: Applications of Integration - Areas

Represent the area as a group of one or more functions. Then apply integration to find the enclosed areas.

One function

Let $y = f(x)$. Then the area under the graph of f from a to b is just the integral of $f(x)$ from a to b .

Note: This will be the NET AREA, A , so if some of the area is positive, A_1 , and some is negative, A_2 , then $A = A_1 - A_2$

Example 1. Find the area under the graph of

$$g(t) = t^2 + .2\sin(15t) \text{ from } t = .5 \text{ to } 2.5$$

WA Integrate $t^2 + .2\sin(15t)$ from $t = .5$ to 2.5

$$A = 5.15822$$

Note: I could have used x as the independent variable.

Note: WA also gives the graph and the anti-derivative.

In the old days we would have found the anti-derivative with techniques of integration and evaluated it at $.5$ and 2.5 to find the definite integral.

The anti-derivative is $t^3/3 - (1/75)\cos(15t)$

$$\begin{aligned} A &= (2.5)^3/3 - \cos(15 \times 2.5)/75 - (.5)^3/3 + \cos(15 \times .5)/75 \\ &= 5.208 - .0109 - .0417 + .0046 = 5.16 \end{aligned}$$

Even with a calculator this would take several minutes, longer for me since I make a lot of careless mistakes and must check my work several times before I am confident of the answer.

Pre-calculator days it would take a lot longer with a slide rule or log tables and trig tables.

Example 2. $g(t) = [t^2 + .2\sin(15t)]^{1/2}$ from $t = .5$ to 2.5

WA Integrate $(t^2 + .2\sin(15t))^{.5}$ from $t = .5$ to 2.5

Answer: 2.99841

There is no easy anti-derivative. This problem would not be included in a calculus book. It has to be "solved" by an approximation technique that only a computer can perform efficiently and quickly.

Example 3. $f(x) = \sin(x)$ from 1.5 to 4.5

WA Integrate $\sin(x)$ from $x=1.5$ to 4.5

Answer: .281533

Note: the graph. Some of the area is positive and some negative. The answer is the NET area.

Example 4. $f(x) = |\sin(x)|$ from $x = 1.5$ to 4.5

WA Integrate absolute value $(\sin(x))$ from $x=1.5$ to 4.5

Answer: 1.85994

Notice the graph. All areas are positive now.

Area between two functions

Example 5. Find the area between the circle $x^2 + y^2 = 25$ and the parabola $y = x^2$.

First, graph both functions.

WA Plot $x^2, (25-x^2)^{.5}$, from $x = -5$ to 5 and $y = 0$ to 5

Second, find their points of intersection

WA Solve $x^2 = (25-x^2)^{.5}$

Answer: $\pm (.5(101^{1/2} - 1))^{1/2} = \pm 2.127$

Third, Find the area between them by integration.

WA Integrate $(25-X^2)^{.5} - X^2$ from $X = -2.12719$ to 2.12719

Answer: 14.1946

Note: The anti-derivative is given, but not very easy to find with simple techniques of integration. Also, finding the points of intersection would be quite a chore too.

The technique is to find the boundaries of the area to be calculated as a set of functions so one can use integration.

Sometimes this means dividing the area into the difference between different functions in different intervals.

Example 6. Multiple intervals

Find the area whose upper boundary is the parabola $y - 10 = -(x - 1)^2$

and whose lower boundary is the two circles $(x + 2)^2 + y^2 = 25$ and $(x - 2)^2 + y^2 = 25$

WA Plot $10-(x-1)^2, (25-(x+2)^2)^{.5}, (25-(x-2)^2)^{.5}$, from $x = -5$ to 5

Now we need to find the correct intervals by determining the points of intersection of these three curves.

$$\text{WA Solve } 10-(x-1)^2 = (25 -(x+2)^2)^{.5}$$

Answer: -1.24872

$$\text{WA Solve } 10-(x-1)^2 = (25 -(x-2)^2)^{.5}$$

Answer we care about: 3.27259

$$\text{WA Solve } (25 -(x+2)^2)^{.5}=(25 -(x-2)^2)^{.5}$$

Answer: 0

So now we can find the area with two integrals over two intervals.

$$\text{WA Integrate } 10-(x-1)^2 -(25 -(x+2)^2)^{.5} \text{ from } -1.24872 \text{ to } 0$$

Answer: 3.04582

$$\text{WA Integrate } 10-(x-1)^2 -(25 -(x-2)^2)^{.5} \text{ from } 0 \text{ to } 3.27259$$

Answer: 12.4601

Total Area: $3.04582 + 12.4601 = 15.50592$

Try this without WA to feel sympathy for our ancestors.

Example 7. What is the difference between the catenary $\cosh(x)$ and a parabola?

The parabola through the points $(0,b)$ and $(a,0)$ and $(-a,0)$ is $y = (a - b)x^2 + b$

$\cosh(0) = 1$, and $\cosh(1) = \cosh(-1) = 1.543$

So, $y = .543x^2 + 1$ is the parabola passing through the catenary at $(-1, \cosh(-1)), (0, \cosh(0))$, and $(1, \cosh(1))$

$$\text{WA Plot } \cosh(x), .543x^2 + 1 \text{ from } x = -1 \text{ to } 1$$

We can see why Galileo thought it was a parabola

WA Integrate $\cosh(x) - .543x^2 - 1$ from $x = -1$ to 1

Wow. Only .0116 difference in area. Which was higher?

Clearly the parabola.

C16E

Applications of Integration - Areas

1. Find the graph and definite integral for the function $f(x) = \cos(x)$ from -2π to 2π .
2. Find the graph and the absolute value of the definite integral for the function $f(x) = \cos(x)$ from -2π to 2π .
3. Find the graph and definite integral for the function $f(x) = \sin(x) + \sin^2(x)$ from 0 to 2π .
4. Find the graph and the absolute value of the definite integral for the function $f(x) = \sin(x) + \sin^2(x)$ from 0 to 2π .
5. Plot the graph for the functions $f(x) = -x^2$ and $f(x) = x^2 - 1$ from $x = -1$ to 1 , then find their points of intersection and the area between the two functions.
6. Plot the graph for the functions $f(x) = x^2$ and $f(x) = \sin(x)$, then find their points of intersection and the area between the two functions.
7. Plot the graph for the functions $f(x) = -x^2 + 5$ and $f(x) = \cos(x)$, then find their points of intersection and the area between the two functions.
8. Plot the graph for the functions $f(x) = 3x^2 - 7$ and $f(x) = \sin(x)$, then find their points of intersection and the area between the two functions.
9. Plot the graph for the functions $f(x) = -x^2 + 8$, $(x + 4)^2 + y^2 = 16$, $(x - 4)^2 + y^2 = 16$, then find their points of intersection and the area between the three functions.
10. Plot the graph for the functions $f(x) = \sin(x)$, $f(x) = \cos(x)$, $x = 0$, from $x = 0$ to π , then find their points of intersection and the area between the three functions.

C16EA

Applications of Integration – Areas

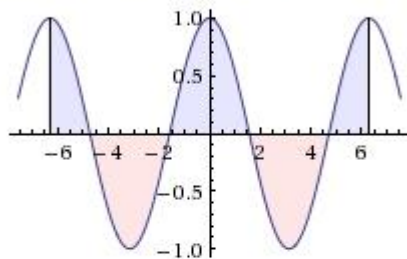
1. Find the graph and definite integral for the function $f(x) = \cos(x)$ from -2π to 2π .

WA integrate $\cos(x)$ from -2π to 2π

Definite integral:

$$\int_{-2\pi}^{2\pi} \cos(x) dx = 0$$

Visual representation of the integral:



Riemann sums:

left sum	0
----------	---

(assuming subintervals of equal length)

Indefinite integral:

$$\int \cos(x) dx = \sin(x) + \text{constant}$$

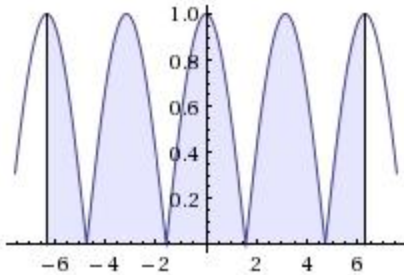
2. Find the graph and the absolute value of the definite integral for the function $f(x) = \cos(x)$ from -2π to 2π .

WA integrate absolute value $\cos(x)$ from -2π to 2π

Definite integral:

$$\int_{-2\pi}^{2\pi} |\cos(x)| dx = 8$$

Visual representation of the integral:



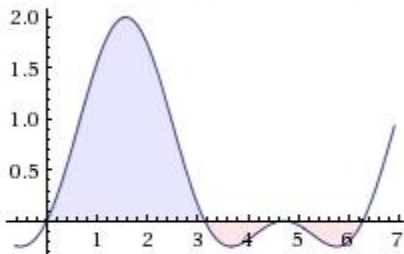
3. Find the graph and definite integral for the function $f(x) = \sin(x) + \sin^2(x)$ from 0 to 2π .

WA integrate $\sin(x) + \sin^2(x)$ from 0 to 2π

Definite integral:

$$\int_0^{2\pi} (\sin(x) + \sin^2(x)) dx = \pi \approx 3.1416$$

Visual representation of the integral:



Riemann sums:

left sum	π
----------	-------

(assuming subintervals of equal length)

Indefinite integral:

$$\int (\sin(x) + \sin^2(x)) dx = \frac{x}{2} - \frac{1}{4} \sin(2x) - \cos(x) + \text{constant}$$

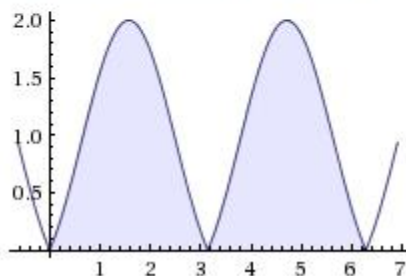
4. Find the graph and the absolute value of the definite integral for the function $f(x) = \sin(x) + \sin^2(x)$ from 0 to 2π .

WA integrate absolute value $\sin(x) + \sin^2(x)$ from 0 to 2π

Definite integral:

$$\int_0^{2\pi} (|\sin(x)| + \sin^2(x)) dx = 4 + \pi \approx 7.1416$$

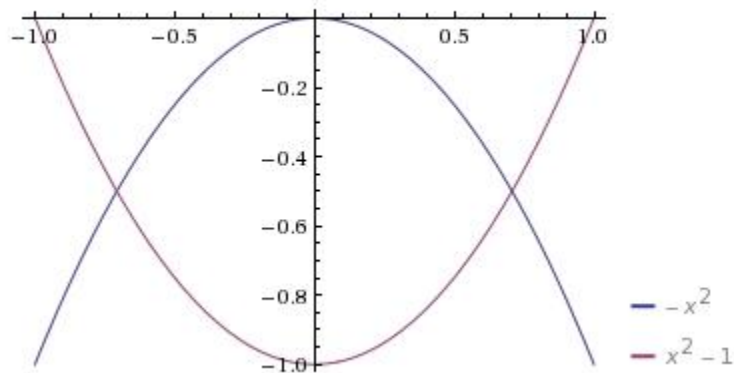
Visual representation of the integral:



5. Plot the graph for the functions $f(x) = -x^2$ and $f(x) = x^2 - 1$ from $x = -1$ to 1, then find their points of intersection and the area between the two functions.

WA plot $-x^2$, $x^2 - 1$ from $x = -1$ to 1

Plot:



WA solve $-x^2 = x^2 - 1$

Points of intersection: $x = \pm 1/2^{0.5} = \pm 0.707107$

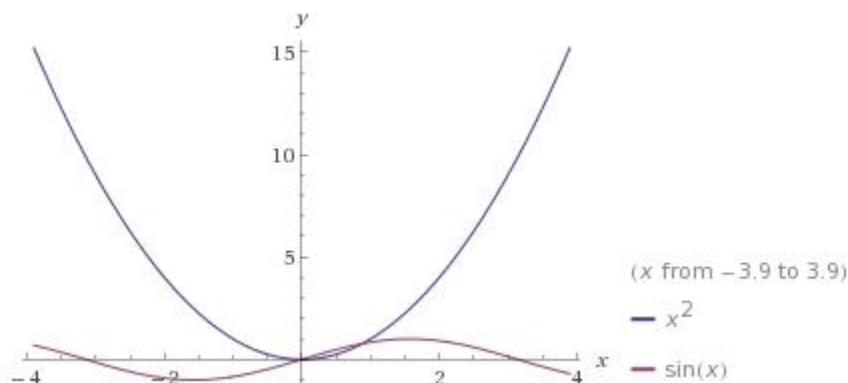
WA integrate $-x^2 - (x^2 - 1)$ from $x = -0.707107$ to 0.707107

Area: 0.942809

6. Plot the graph for the functions $f(x) = x^2$ and $f(x) = \sin(x)$, then find their points of intersection and the area between the two functions.

WA plot x^2 , $\sin(x)$

Plot:



WA solve $\sin(x) = x^2$

Points of intersection: $x = 0, 0.876726$

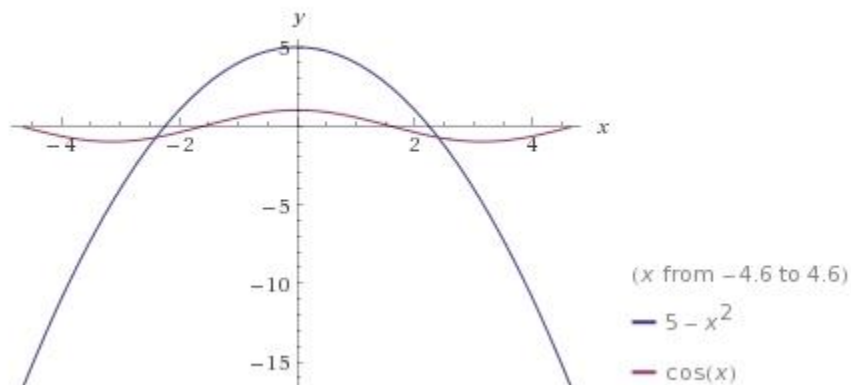
WA integrate $\sin(x) - (x^2)$ from $x = 0$ to 0.876726

Area: 0.135698

7. Plot the graph for the functions $f(x) = -x^2 + 5$ and $f(x) = \cos(x)$, then find their points of intersection and the area between the two functions.

WA plot $-x^2 + 5$, $\cos(x)$

Plots:



WA solve $-x^2 + 5 = \cos(x)$

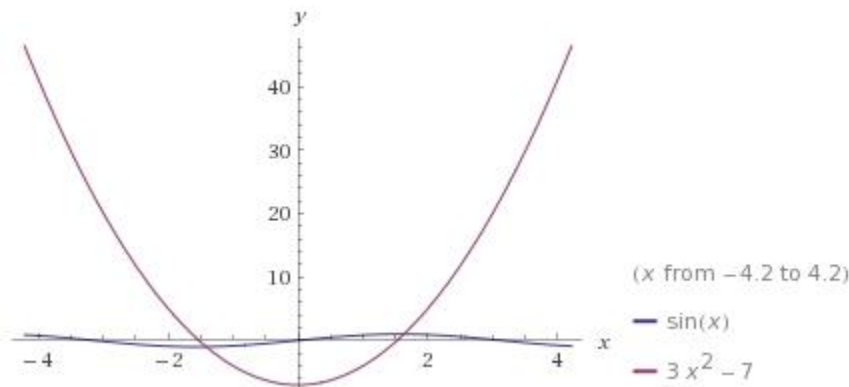
Points of intersection: $x = \pm 2.39451$

WA integrate $-x^2 + 5 - \cos(x)$ from $x = -2.39451$ to 2.39451

Area: 13.4332

8. Plot the graph for the functions $f(x) = 3x^2 - 7$ and $f(x) = \sin(x)$, then find their points of intersection and the area between the two functions.

WA plot $3x^2 - 7, \sin(x)$



WA solve $3x^2 - 7 = \sin(x)$

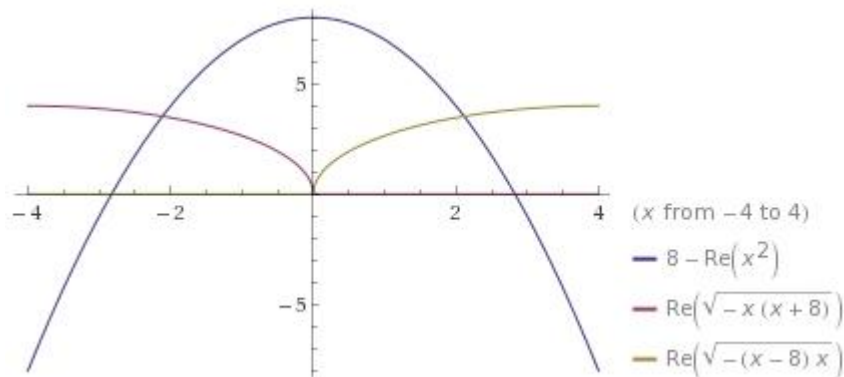
Points of intersection: $x = -1.41563, 1.63280$

WA integrate $\sin(x) - (3x^2 - 7)$ from $x = -1.41563$ to 1.63280

Area: 14.3655

9. Plot the graph for the functions $f(x) = -x^2 + 8$, $(x + 4)^2 + y^2 = 16$, $(x-4)^2 + y^2 = 16$, then find their points of intersection and the area between the three functions.

WA plot $-x^2 + 8, (16 - (x+4)^2)^{.5}, (16 - (x-4)^2)^{.5}$ from $x = -4$ to 4



Points of intersection:

WA solve $-x^2 + 8 = (16 - (x+4)^2)^{.5}$

$x = -2.11474$

WA solve $-x^2 + 8 = (16 - (x-4)^2)^{.5}$

$x = 2.11474$

$$\text{WA solve } (16 - (x+4)^2)^{.5} = (16 - (x-4)^2)^{.5}$$

$$x = 0$$

Area:

$$\text{WA integrate } (-x^2+8) - ((16 - (x+4)^2)^{.5}) \text{ from } x = -2.11474 \text{ to } 0$$

$$\text{Area} = 8.4508$$

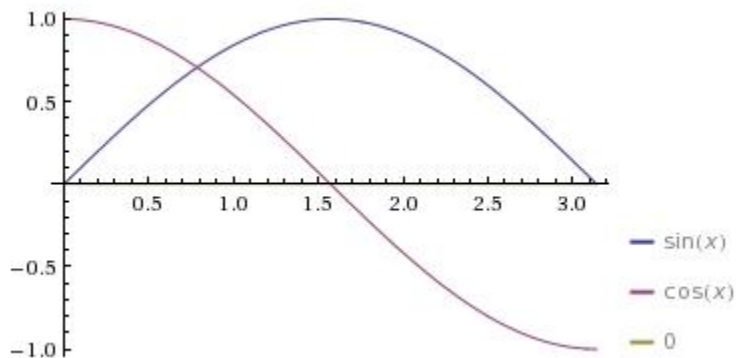
$$\text{WA integrate } (-x^2+8) - ((16 - (x-4)^2)^{.5}) \text{ from } x = 0 \text{ to } 2.11474$$

$$\text{Area} = 8.4508$$

$$\text{Total Area} = 16.9016$$

10. Plot the graph for the functions $f(x) = \sin(x)$, $f(x) = \cos(x)$, $x=0$, from $x=0$ to π , then find their points of intersection and the area between the three functions.

WA plot $\sin(x)$, $\cos(x)$, $x=0$, from $x=0$ to π



Points of intersection:

$$\text{WA solve } \sin(x) = \cos(x)$$

$$x = 0.785398$$

$$\text{WA solve } \sin(x) = 0$$

$$x = 3.14159$$

$$\text{WA solve } \cos(x) = 0$$

$$x = 1.57080$$

Area:

WA integrate $\sin(x) - \cos(x)$ from $x = 0.785398$ to 1.57080

Area = 0.414217

WA integrate $\sin(x) - 0$ from $x = 1.57080$ to 3.14159

Area = 0.999996

Total Area = 1.414213

C17 LESSON: Applications of Integration – Arc Length

Suppose you would like to know the length of the graph of $f(x)$ from $(a, f(a))$ to $(b, f(b))$.

The answer is the integral of $[1 + (f'(x))^2]^{1/2}$ from a to b .

Here's why.

Divide the interval (a, b) into subintervals a_0 to a_n . Each subinterval has length $h = (b - a)/n$

The distance from $(a_i, f(a_i))$ to $(a_{i+1}, f(a_{i+1}))$ would be

$$\begin{aligned} & [(f(a_{i+1}) - f(a_i))^2 + (a_{i+1} - a_i)^2]^{1/2} \\ &= [(f(a_i + h) - f(a_i))^2 + h^2]^{1/2} \\ &= [\{(f(a_i + h) - f(a_i))/h\}^2 + 1]^{1/2} \times h \end{aligned}$$

Now the Arc Length is approximated by

$$\text{SUM } [\{(f(a_i + h) - f(a_i))/h\}^2 + 1]^{1/2} \times h \quad i = 1, \dots, n$$

If $h = dx$ is an infinitesimal, then this becomes

$$\text{Infinite Sum } [\{(f(x+dx) - f(x))/dx\}^2 + 1]^{1/2} \times dx \quad \text{OR}$$

$$\text{Integral } [(f'(x))^2 + 1]^{1/2} \text{ as } x = a \text{ to } b$$

This heuristic argument can be made as rigorous as you wish when you treat the Hyperreal number system rigorously.

Example 1. Find the arc length of a semicircle of radius 1. Of course, we know the answer is π .

$f(x) = (1 - x^2)^{1/2}$ has a graph which is this semi-circle:

$$f'(x) = -x(1 - x^2)^{-1/2}$$

So, $[1 + (f'(x))^2]^{1/2} = [1/(1 - x^2)]^{1/2}$

Thus, arc length is Integral $[1/(1 - x^2)]^{1/2}$ from $x = -1$ to 1

WA Integrate $(1/(1 - x^2))^{.5}$ from -1 to 1

But, WA can do this directly.

WA Arc Length $(1 - x^2)^{.5}$ from $x = -1$ to 1

Note: the Integral this was interpreted as.

Example 2. What is the length of the parabola $f(x) = x^2$ from $(1,1)$ to $(3,9)$?

WA Arc length x^2 from $x=1$ to 3

Answer: 8.268

Note the Integral

Example 3. What is the length of one cycle of the sine curve?

WA Arc length $\sin(x)$ from $x = 0$ to 2π

Answer: 7.6404

Note: It didn't matter whether $f(x)$ was above or below the axis, unlike areas.

Note: This integral cannot be solved with ordinary functions and techniques of integration. It is what is called an elliptic integral, whose antiderivative is a Special Function that can only be evaluated via a table or polynomial approximation. This would not have been a problem given in a classical calculus course.

WA integrate $(1+(\cos(x))^2)^{.5}$

Note: the series expansion for this elliptic integral. This is how the tables were constructed.

As you see, WA makes these problems very easy.

Example 4. Find the arc length of a very wiggly curve:

$$f(x) = 2\cos(3x) + .5\sin(15x) \text{ from } x = 0 \text{ to } 2$$

WA Arc length $2\cos(3x) + .5\sin(15x)$ from $x = 0$ to 2

Answer: 11.4767

Example 5. Find the length of the catenary from $x = -3$ to 3

The catenary is the curve formed by a chain of uniform density when suspended from two points.

It is the graph of the function $f(x) = \frac{1}{2}(e^x + e^{-x})$

WA Arc length $.5(e^x + e^{-x})$ from $x = -3$ to 3

Answer: 20.0357

Galileo thought it was a parabola, which it looks like. However, using the calculus it was proven this was wrong, and what is called the catenary is the correct function.

As you can see, it is very difficult to solve many of these problems with the classical tools of calculus.

WA makes it very easy.

This is why a tool like WA is mandatory for any STEM professional.

You can use WA to explore many examples.

Just make them up and play with it.

You may go to engineering and science books and look for examples to play with.

Just imagine what our ancestors would have done with WA and thought of it. Sort of like much of our modern technology like smart phones, GPS, airplanes, computers, TV, etc.

Unfortunately, most current calculus textbooks and courses are as antiquated as a horse and buggy. Yes, the horse and buggy were great technologies in their day, and very difficult to master. But, what value is it to master these obsolete technologies today?

You must learn a WA type of tool today if you are going to compete in the STEM marketplace.

And, your mastery of calculus (and later differential equations and linear algebra and more) will be much easier and more thorough.

Practice and play with WA until it is as easy for you as a video game or smart phone.

C17E

Applications of Integration – Arc Length

Find the arc length for the following functions.

1. $f(x) = \cos(x)$ from $x = 0$ to 2π .
2. $f(x) = \sin(x) + \sin^2(x)$ from $x = 0$ to 2π .
3. $f(x) = 4x^3 + 6x^2 - 8x$ from $x = -2$ to 2 .
4. $f(x) = e^x$ from $x = 1$ to 3 .
5. $f(x) = e^x - e^{-x}$ from $x = -1.5$ to 0 .
6. $f(x) = (x-1)/(x^2 + x)$ from $x = 1$ to 5 .
7. $f(x) = \sin(2x) + \sin(1.1x)$ from $x = 0$ to 3π .
8. $f(x) = \cos(3x) + \cos(x)$ from $x = 0$ to 2π .
9. $f(x) = \cos(3x) - \cos(2x)$ from $x = 0$ to 2π .
10. $f(x) = \tan(x)$ from $x = 0$ to $\pi/2$.

C17EA

Applications of Integration – Arc Length

Find the arc length for the following functions.

1. $f(x) = \cos(x)$ from $x = 0$ to 2π .

WA arc length $\cos(x)$ from $x = 0$ to 2π

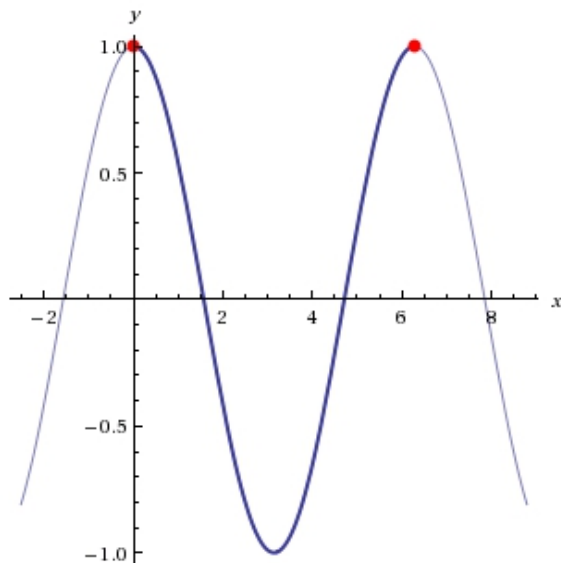
Result

[More digits](#)

$$\int_0^{2\pi} \sqrt{1 + \sin^2(x)} \, dx = 4E(-1) \approx 7.6404$$

$E(m)$ is the complete elliptic integral of the second kind with parameter $m = k^2$

Plot



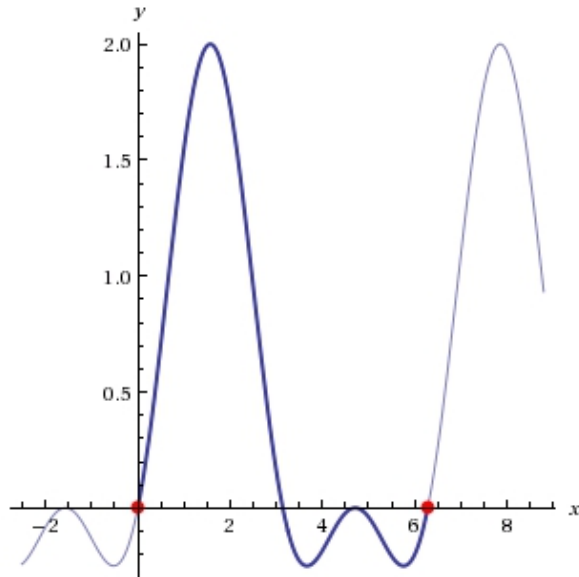
2. $f(x) = \sin(x) + \sin^2(x)$ from $x = 0$ to 2π .

WA arc length $\sin(x) + \sin^2(x)$ from $x = 0$ to 2π

Result:

$$\int_0^{2\pi} \sqrt{1 + (\cos(x) + 2 \cos(x) \sin(x))^2} dx \approx 8.5630819276\dots$$

Plot:

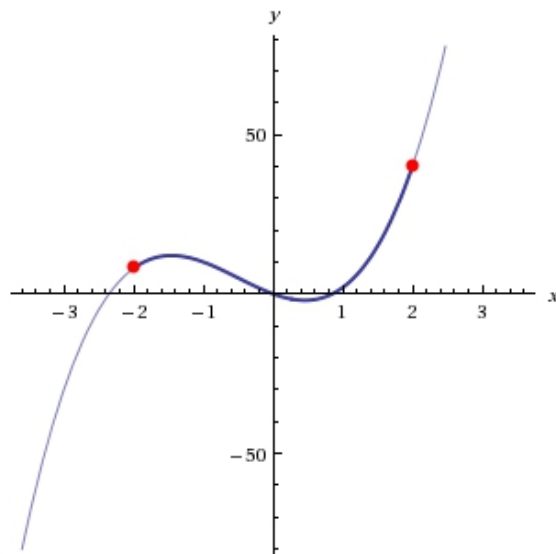


3. $f(x) = 4x^3 + 6x^2 - 8x$ from $x = -2$ to 2 .
WA arc length $4x^3 + 6x^2 - 8x$ from $x = -2$ to 2

Result:

$$\int_{-2}^2 \sqrt{1 + (-8 + 12x + 12x^2)^2} dx \approx 60.46711947\dots$$

Plot:

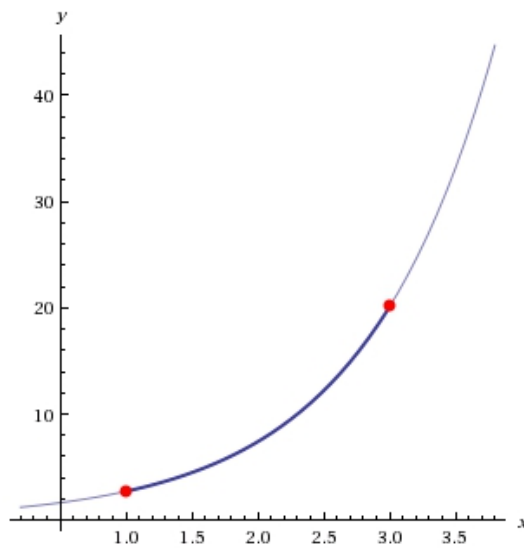


4. $f(x) = e^x$ from $x = 1$ to 3 .
WA arc length e^x from $x = 1$ to 3

Result

$$\int_1^3 \sqrt{1 + e^{2x}} dx \approx 17.524311440278\dots$$

Plot

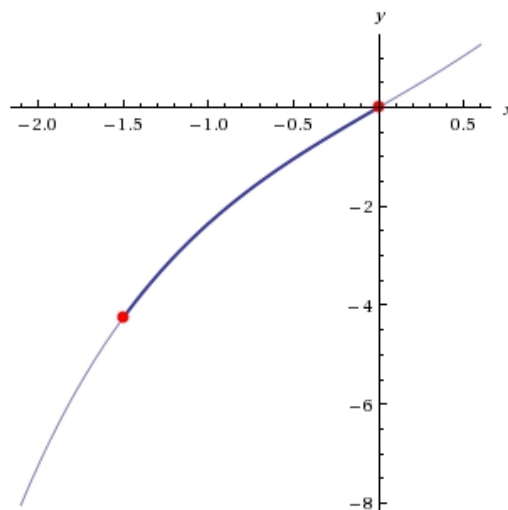


5. $f(x) = e^x - e^{-x}$ from $x = -1.5$ to 0 .
WA arc length $e^x - e^{-x}$ from $x = -1.5$ to 0

Result

$$\int_{-1.5}^0 \sqrt{3 + e^{-2x} + e^{2x}} dx \approx 4.53065795266\dots$$

Plot

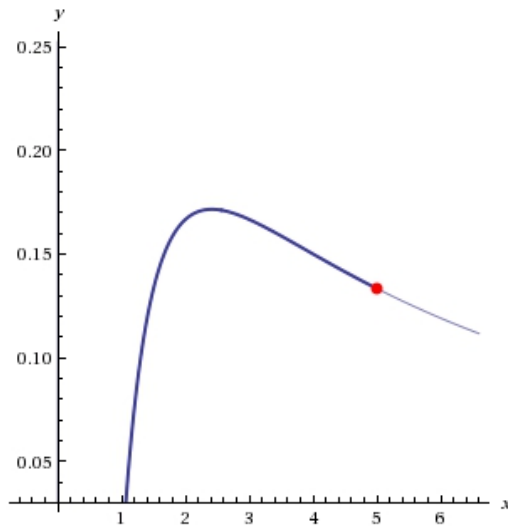


6. $f(x) = (x-1)/(x^2 + x)$ from $x = 1$ to 5.
WA arc length $(x-1)/(x^2 + x)$ from $x = 1$ to 5

Result

$$\int_1^5 \sqrt{1 + \frac{(-1 - 2x + x^2)^2}{x^4(1+x)^4}} dx \approx 4.02159\dots$$

Plot

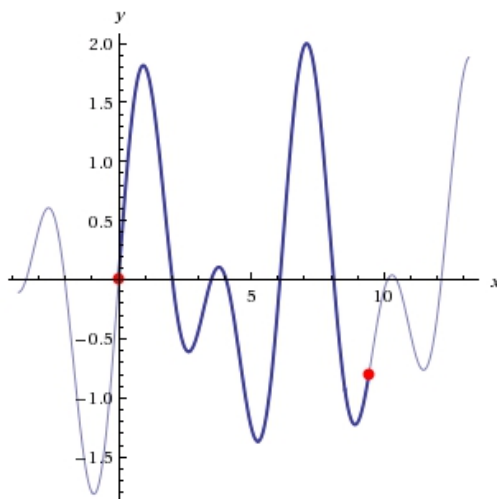


7. $f(x) = \sin(2x) + \sin(1.1x)$ from $x = 0$ to 3π .
WA arc length $\sin(2x) + \sin(1.1x)$ from $x = 0$ to 3π

Result

$$\int_0^{3\pi} \sqrt{1 + (1.1 \cos(1.1x) + 2 \cos(2x))^2} dx \approx 17.185760620\dots$$

Plot



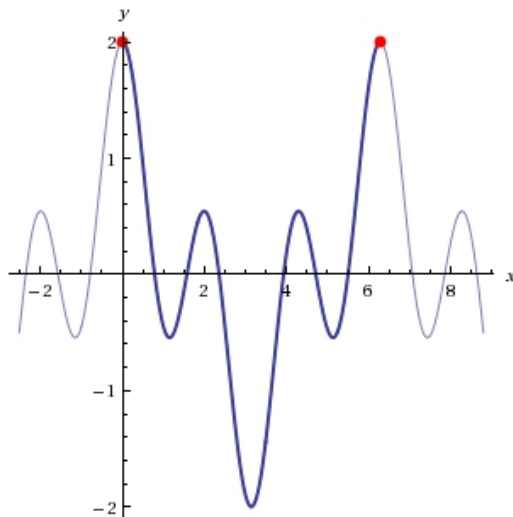
8. $f(x) = \cos(3x) + \cos(x)$ from $x = 0$ to 2π .

WA arc length $\cos(3x) + \cos(x)$ from $x = 0$ to 2π

Result

$$\int_0^{2\pi} \sqrt{1 + (\sin(x) + 3 \sin(3x))^2} dx \approx 14.3467328\dots$$

Plot



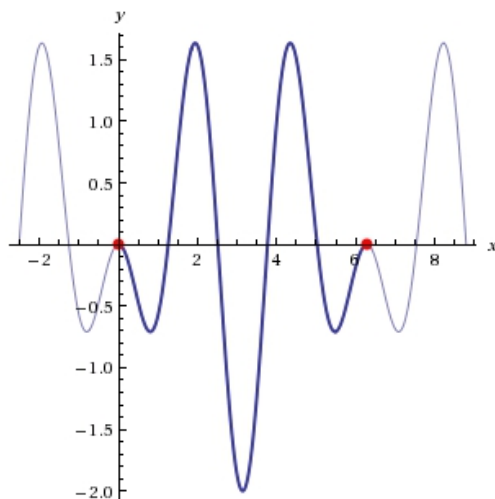
9. $f(x) = \cos(3x) - \cos(2x)$ from $x = 0$ to 2π .

WA arc length $\cos(3x) - \cos(2x)$ from $x = 0$ to 2π

Result

$$\int_0^{2\pi} \sqrt{1 + (2 \sin(2x) - 3 \sin(3x))^2} dx \approx 15.408968003716\dots$$

Plot



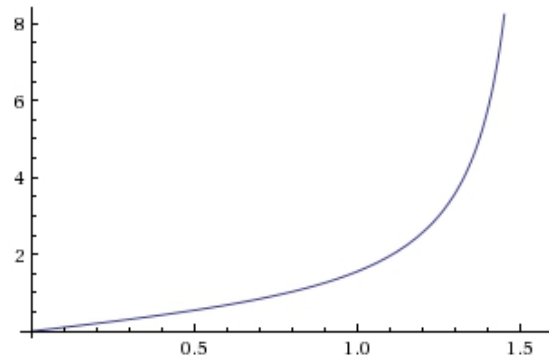
10. $f(x) = \tan(x)$ from $x = 0$ to $\pi/2$.

WA arc length $\tan(x)$ from $x = 0$ to $\pi/2$

Result

(arc length is infinite)

Plot



Arc length is infinite, but why? Because as x approaches $\pi/2$, $f(x)$ approaches infinity.

C18 LESSON: Applications of Integration – Volume – Disc Method

Let $f(x)$ be a function defined with derivative over (a,b)

Rotate $f(x)$ about the x -axis to form a volume of revolution

What is this volume?

Slice the volume into very thin discs with thickness, dx .

The area of the disc at x will be $\text{Pi}[f(x)]^2$

The volume of the disc at x will be $\text{Area} \times dx = \text{Pi}[f(x)]^2 dx$

So the volume of the of the revolution will be

Integral $\text{Pi}[f(x)]^2 dx$ from a to b .

Example 1. Rotate the parabola $f(x) = y = x^2$ about the x axis from 0 to 2.
What is its volume?

WA1 integrate $\text{pi}x^4$ from 0 to 2

Answer: 20.106

Or, we can do it directly with WA as follows:

WA2 volume of revolution x^2 from 0 to 2

Example 2. What is the volume of a sphere? Rotate the circle $f(x) = (1 - x^2)^{1/2}$ about the x axis?

WA3 integrate $\text{pi}(1 - x^2)$ from -1 to 1

Answer. $4\text{Pi}/3$ of course

WA4 volume of revolution $(1-x^2)^{.5}$ from $x = -1$ to 1

Of course, you can integrate from any limits. For example, suppose you just want the volume of the right hemisphere.

WA5 integrate $\pi(1 - x^2)$ from 0 to 1

WA6 volume of revolution $(1-x^2)^{.5}$ from $x = 0$ to 1

Example 3. Rotate a sine about the x axis

WA7 volume of revolution $\sin(x)$ from $x = 0$ to π

Answer: $\pi^2/2$

Example 4. Rotate a cosine about the x axis for one cycle

WA8 volume of revolution of $\cos(x)$ from 0 to 2π

Note: WA also gave us the surface area. But, we will discuss that in another Lesson, C20

Example 4. Volume of Revolution of $f(x) = x^2 + 1 + .5\sin(15x)$ from $x = .5$ to 1.9

WA9 Volume of revolution $x^2+1+.5\sin(15x)$ from $x=.5$ to 1.9

Answer: 35.597 Note the integral

Also, note the surface area of the Solid

Historically, it was easy to set up the integral. The difficulty was in evaluating it.

Now, WA makes this very easy too.

Indeed, WA will let you evaluate problems that were essentially intractable historically if one could not find an anti-derivative with ordinary functions.

Example: Find the volume of the solid of revolution of $\sin(x^2)$ from 0 to 2π

WA10 volume of revolution of $\sin(x^2)$ from 0 to 2π

It is easy to set up the integral, but difficult to integrate it since it involves a special function. The ordinary techniques of integration would not solve it easily.

WA11 integrate $(\sin(x^2))^2$

The antiderivative is a Special Function.

We can also find the volume of a solid of revolution of an area enclosed between two functions

$y = f(x)$ and $y = g(x)$ from a to b where $f(x) > g(x)$

Integral $\pi[f^2(x) - g^2(x)]$ from a to b .

Example: what is the volume of the solid of revolution enclosed between the parabolas $y = x^{1/2}$ and $y = x^2$?

WA12 Plot $x^{.5}$, x^2 from 0 to 1

WA13 Integrate $\pi(x - x^4)$ from 0 to 1

Answer: .94248

Now we could calculate the volume of the solid of revolution for the larger function and then subtract the volume of the solid of revolution for the smaller function.

WA14 volume of solid of revolution $x^{.5}$ from 0 to 1

Answer: 1.5780

WA15 volume of solid of revolution x^2 from 0 to 1

Answer: .628319

Note: $1.5780 - .628319 = .94248$

Now there is another way using what is called the shell method we will learn about in the next lesson C19

WA16 integrate $2\pi x(x^{.5} - x^2)$ from 0 to 1

If you can find a way to do this directly with a volume of revolution command please post it to the Forum or email it to me.

C18E

Applications of Integration – Volume – Disc Method

Find the volume for the following functions, rotated about the x-axis.

1. $f(x) = \sin(x) + \sin^2(x)$ from $x = 0$ to 2π .
2. $f(x) = e^x$ from $x = 1$ to 3 .
3. $f(x) = (x-1)/(x^2 + x)$ from $x = 1$ to 5 .
4. $f(x) = \sin(2x) + \sin(x)$ from $x = 0$ to 2π .
5. $f(x) = e^x - e^{-x}$ from $x = -3$ to 3 .
6. $f(x) = e^x + 5x^2$ from $x = -2$ to 2 .
7. $f(x) = 5x + \sin(3x)$ from $x = -2\pi$ to 2π .
8. $f(x) = \cos(2x)$ from $x = 0$ to 2π .
9. $f(x) = -x^2$ and $f(x) = x^2 - 1$ from $x = -0.707107$ to 0.707107 . $f(x) = -x^2$ is the smaller function, and $f(x) = x^2 - 1$ is the larger function.
10. $f(x) = -x^2 + 5$ and $f(x) = \cos(x)$ from $x = -2.39451$ to 2.39451 . $f(x) = -x^2 + 5$ is the larger function, and $f(x) = \cos(x)$ is the smaller function.

C18EA

Find the volume for the following functions, rotated about the x-axis.

1. $f(x) = \sin(x) + \sin^2(x)$ from $x = 0$ to 2π .

WA **volume of revolution $\sin(x) + \sin^2(x)$ from $x = 0$ to 2π**

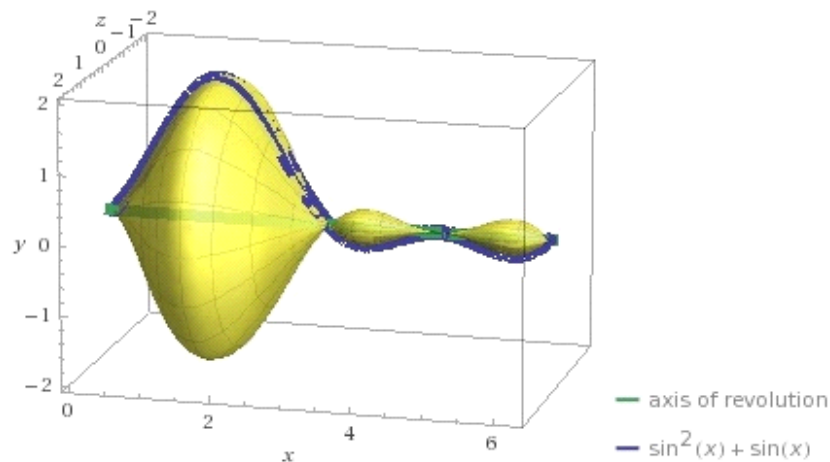
Result:

$$\int_0^{2\pi} \pi \sin^2(x) (1 + \sin(x))^2 dx = \frac{7\pi^2}{4} \approx 17.2718$$

Surface area of solid:

37.7748

Plot:



2. $f(x) = e^x$ from $x = 1$ to 3 .

WA volume of revolution e^x from $x = 1$ to 3

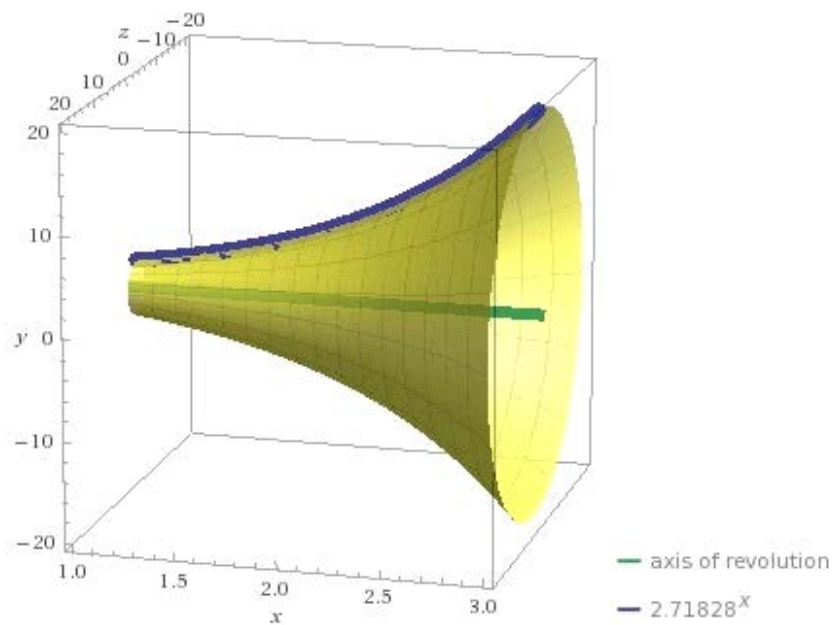
Result:

$$\int_1^3 e^{2x} \pi dx = \frac{1}{2} e^2 (e^4 - 1) \pi \approx 622.098$$

Surface area of solid:

2541.05

Plot



(axes not equally scaled)

3. $f(x) = (x-1)/(x^2 + x)$ from $x = 1$ to 5 .

WA volume of revolution $(x-1)/(x^2 + x)$ from $x = 1$ to 5

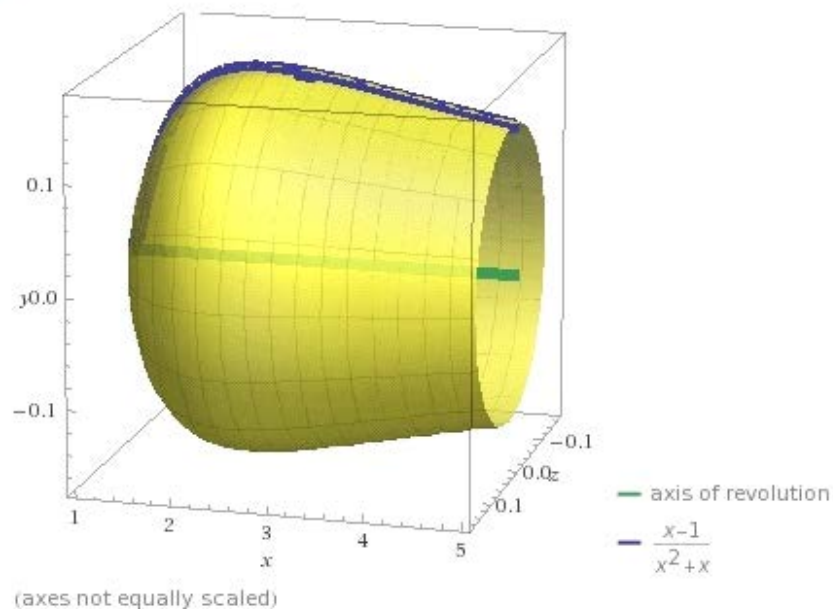
Result

$$\int_1^5 \frac{\pi (-1+x)^2}{(x+x^2)^2} dx = \pi \left(\frac{32}{15} - \log\left(\frac{625}{81}\right) \right) \approx 0.28284$$

Surface area of solid:

3.75729

Plot



4. $f(x) = \sin(2x) + \sin(x)$ from $x = 0$ to 2π .

WA volume of revolution $\sin(2x) + \sin(x)$ from $x = -$ to 2π

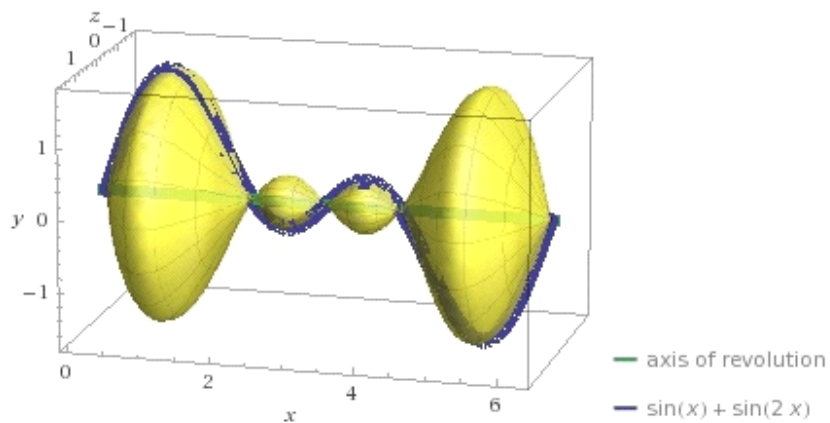
Result:

$$\int_0^{2\pi} \pi (\sin(x) + \sin(2x))^2 dx = 2\pi^2 \approx 19.7392$$

Surface area of solid:

53.8654

Plot:



5. $f(x) = e^x - e^{-x}$ from $x = -3$ to 3 .

WA volume of revolution $e^x - e^{-x}$ from $x = -3$ to 3

Result:

[More digits](#)

$$\int_{-3}^3 (-e^{-x} + e^x)^2 \pi dx = 2\pi (\sinh(6) - 6) \approx 1229.7$$

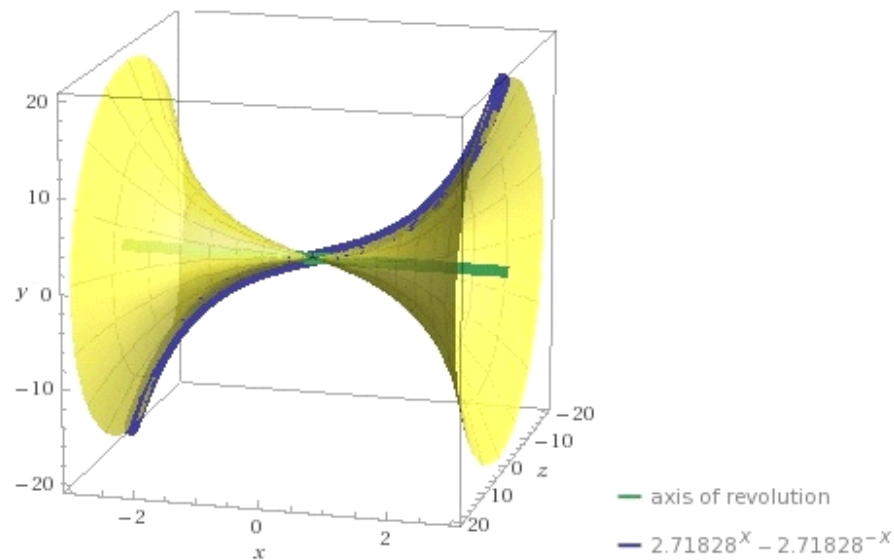
$\sinh(x)$ is the hyperbolic sine function

Surface area of solid:

5058.86

Plot

[Show solid](#)



6. $f(x) = e^x + 5x^2$ from $x = -2$ to 2 .

WA volume of revolution $e^x + 5x^2$ from $x = -2$ to 2

Result

[More digits](#)

$$\int_{-2}^2 \pi (e^x + 5x^2)^2 dx = \pi \left(320 + \frac{20(e^4 - 5)}{e^2} + \sinh(4) \right) \approx 1512.79$$

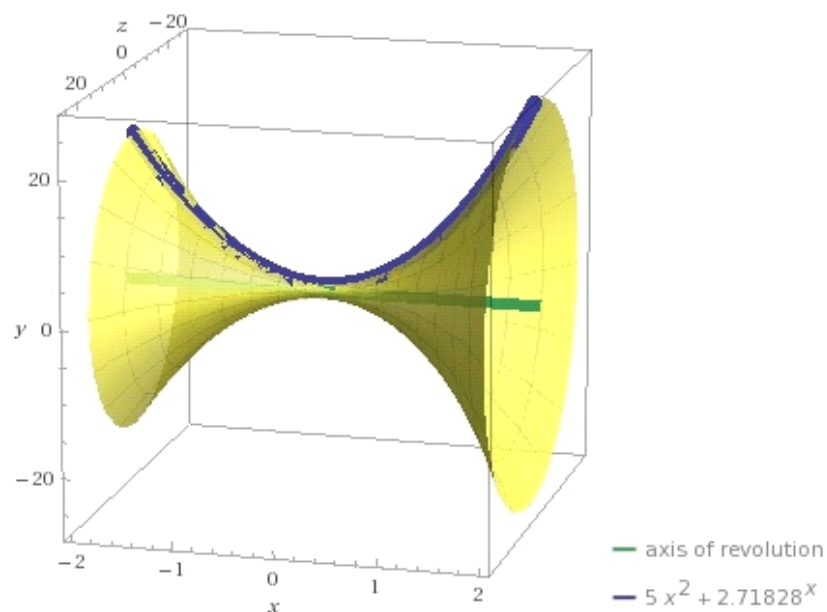
$\sinh(x)$ is the hyperbolic sine function

Surface area of solid:

7263.57

Plot

[Show solid](#)



7. $f(x) = 5x + \sin(3x)$ from $x = -2\pi$ to 2π .

WA volume of revolution $5x + \sin(3x)$ from $x = -2\pi$ to 2π

Result

[More digits](#)

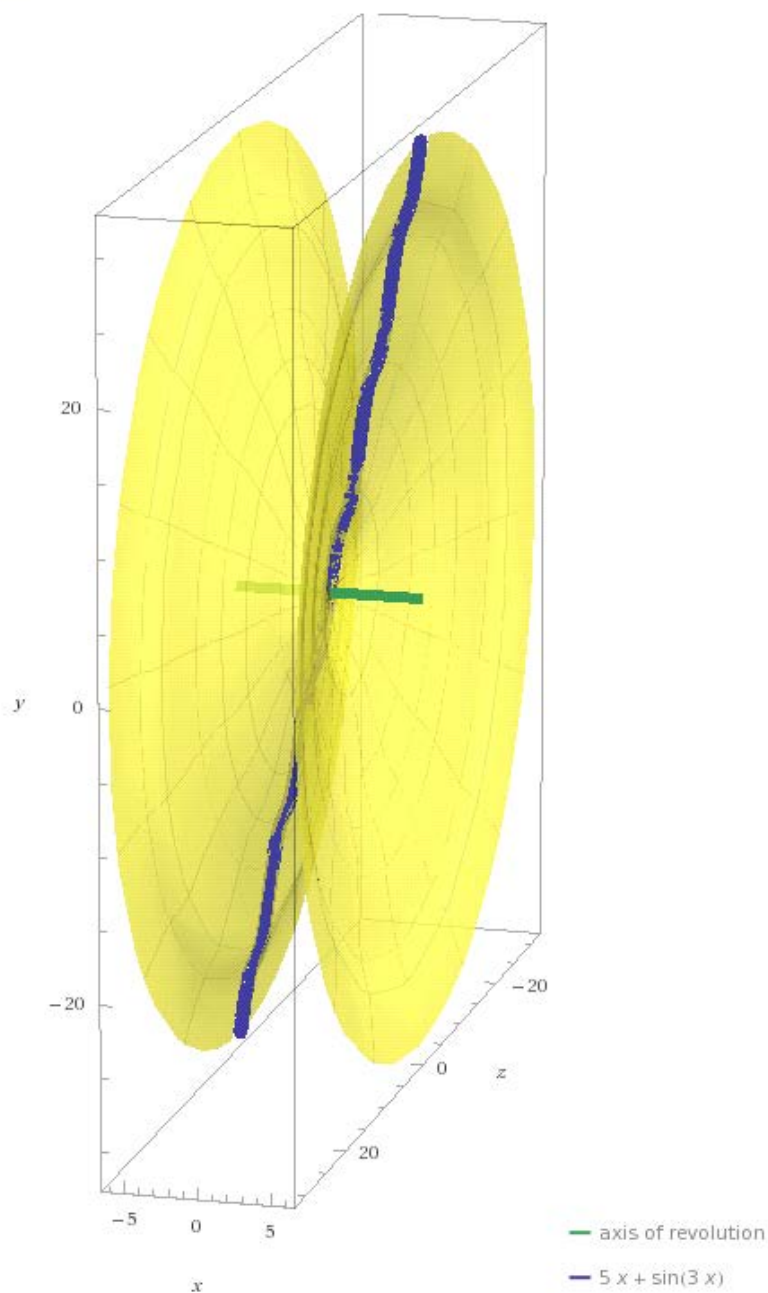
$$\int_{-2\pi}^{2\pi} \pi (5x + \sin(3x))^2 dx = \frac{2}{3} \pi^2 (200\pi^2 - 17) \approx 12\,876.$$

Surface area of solid:

12553.4

Plot

[Show solid](#)



8. $f(x) = \cos(2x)$ from $x = 0$ to 2π .

WA volume of revolution $\cos(2x)$ from $x = 0$ to 2π

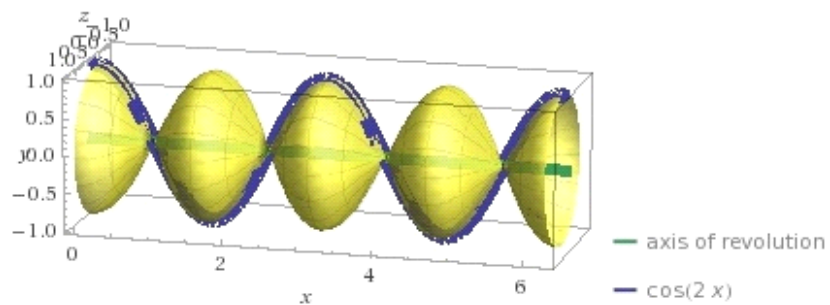
Result:

$$\int_0^{2\pi} \pi \cos^2(2x) dx = \pi^2 \approx 9.8696$$

Surface area of solid:

43.4531

Plot:



9. $f(x) = -x^2$ and $f(x) = x^2 - 1$ from $x = -0.707107$ to 0.707107 . $f(x) = -x^2$ is the smaller function, and $f(x) = x^2 - 1$ is the larger function.

larger: WA **volume of revolution $x^2 - 1$ from $x = -0.707107$ to 0.707107**

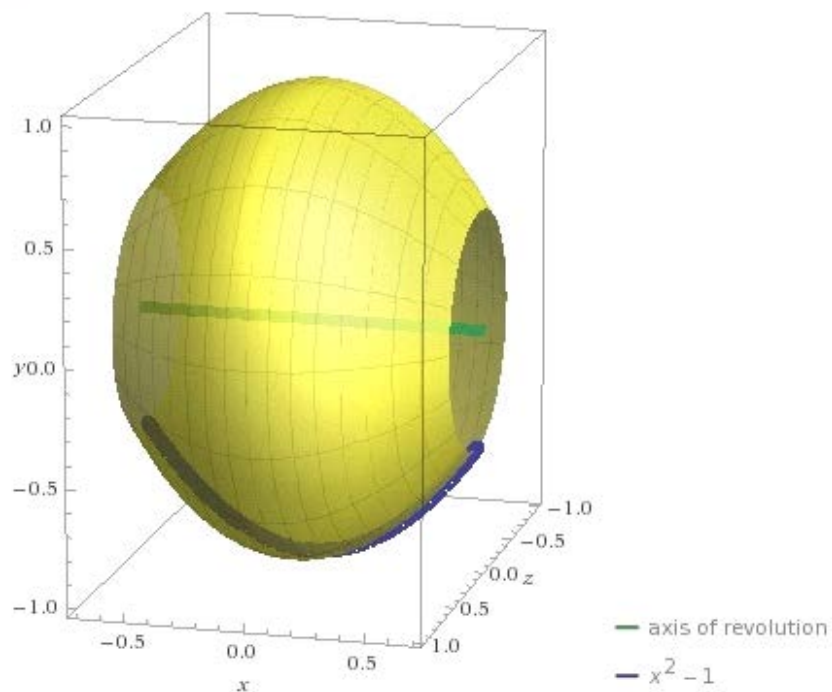
Result:

$$\int_{-0.707107}^{0.707107} \pi (-1 + x^2)^2 dx = 3.18407$$

Surface area of solid:

10.6873

Plot:



smaller: **WA volume of revolution $-x^2$ from $x = -0.707107$ to 0.707107**

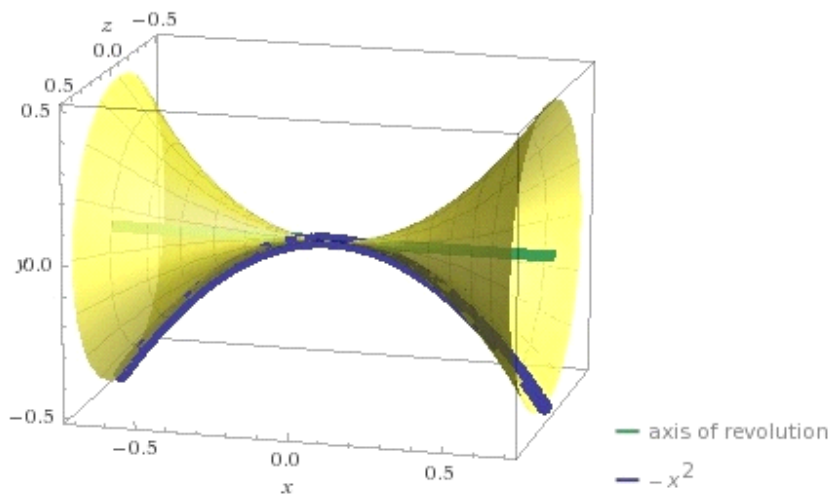
Result:

$$\int_{-0.707107}^{0.707107} \pi x^4 dx = 0.222144$$

Surface area of solid:

3.75052

Plot:



Volume: $3.18407 - 0.222144 = 2.961926$

10. $f(x) = -x^2 + 5$ and $f(x) = \cos(x)$ from $x = -2.39451$ to 2.39451 .
 $f(x) = -x^2 + 5$ is the larger function, and $f(x) = \cos(x)$ is the smaller function.

larger: **WA volume of revolution $-x^2 + 5$ from $x = -2.39451$ to 2.39451**

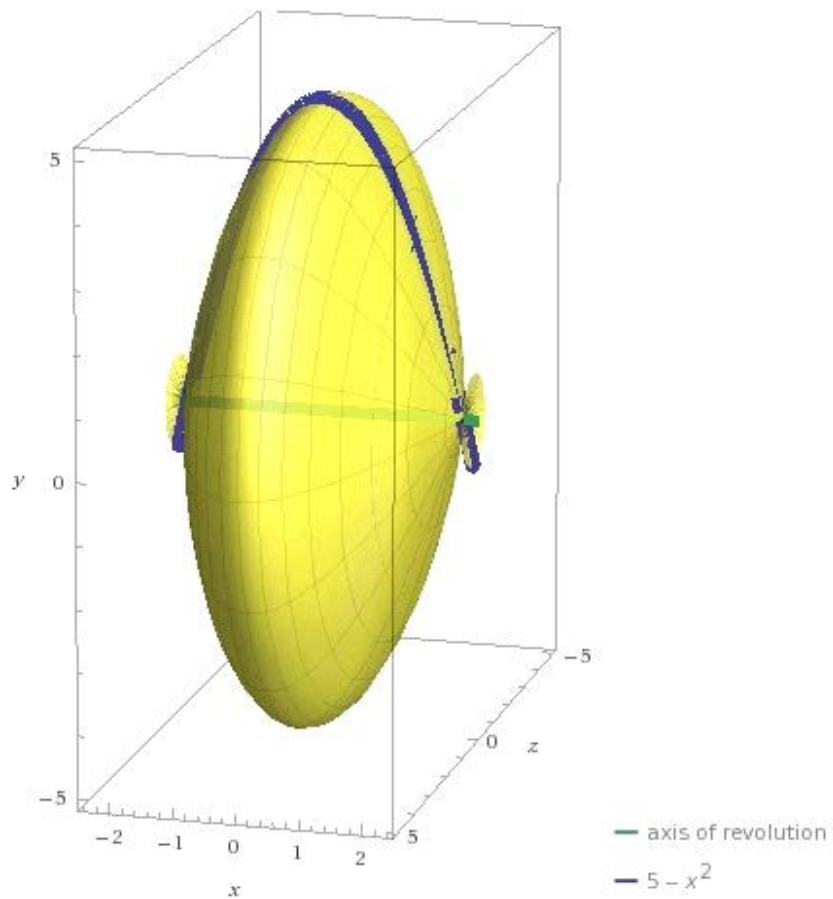
Result:

$$\int_{-2.39451}^{2.39451} \pi (5 - x^2)^2 dx = 187.504$$

Surface area of solid:

198.817

Plot:



smaller: **WA volume of revolution $\cos(x)$ from $x = -2.39451$ to 2.39451**

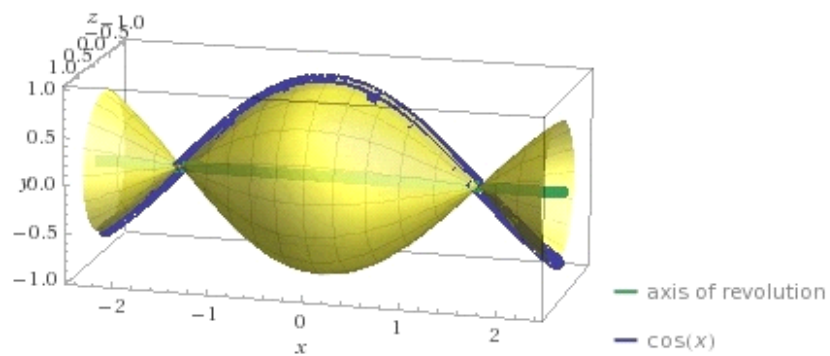
Result:

$$\int_{-2.39451}^{2.39451} \pi \cos^2(x) dx = 5.95639$$

Surface area of solid:

23.0727

Plot:



volume: $187.504 - 5.95639 = 181.54761$

C19 LESSON: Applications of Integration – Volume – Shell Method

We can rotate the region enclosed between the parabolas $f(x) = x^{1/2}$ and $g(x) = x^3$ from 0 to 1 about the x-axis using the disc method by integrating $\text{Pi}[(f(x))^2 - (g(x))^2]dx$ from 0 to 1.

WA1 integrate $\text{Pi}(x - x^6)$ from 0 to 1

WA2 volume of solid of revolution of region between $x^{.5}$ and x^3 from 0 to 1 about the x axis

Now suppose we want to rotate this same region about the y axis?

We can use what is called the shell method whereby we integrate $2\text{Pi}x[f(x) - g(x)]dx$ from 0 to 1

Do you see why?

$[f(x) - g(x)]dx$ is the area of a thin vertical strip which is x units from the y axis. We rotate this strip about the y axis to get a shell of volume $2\text{Pi}x[f(x) - g(x)]dx$ since $2\text{Pi}x$ is the circumference of a circle of radius x .

WA3 integrate $2\text{Pi}x(x^{.5} - x^3)$ from 0 to 1

WA4 volume of solid of revolution of region between $x^{.5}$ and x^3 from 0 to 1 about the y axis

We can use either the disc method or the shell method, whichever is easier to set up and integrate.

Or, we can simply use WA, and we also then get the picture of the solid of revolution.

Let's now look at the region of the intersection of two circles.

Example

WA5 Plot $(x-7)^2 + (y-8)^2 - 25=0$, $(x-3)^2 + (y-8)^2 - 36=0$ from -5 to 15

Suppose we want to rotate around the x axis. Which would be easier to use, disc or shell?

Answer: Probably neither since we have to divide the region into two sub-regions.

Around the y axis? Disc or shell.

Same answer.

But, what if we exchanged the x and y, or reflected in the 45° line $y = x$? We would get the same shape region. Only now rotating about the x axis would be like rotating the original region about the y axis, and vice versa.

WA6 Plot $(y-7)^2 + (x-8)^2 - 25=0$, $(y-3)^2 + (x-8)^2 - 36=0$ from 0 to 15

Now we have two functions.

The upper function would be:

$$\text{WA7 Solve for } y, (y-3)^2 + (x-8)^2 - 36=0$$

The lower function would be:

$$\text{WA8 Solve for } y, (y-7)^2 + (x-8)^2 - 25=0$$

We also need to know the two points of intersection so we know the limits on the x axis.

$$\text{WA9 Solve } (y-7)^2 + (x-8)^2 - 25=0, (y-3)^2 + (x-8)^2 - 36=0$$

Now, we can calculate the volume of the solid of revolution about the x axis

WA 10 Volume of solid of revolution of region between $3+(-x^2+16x-28)^{.5}$ and $7-(-x^2+16x-39)^{.5}$ from 3.039 to 13 around the x axis

Now the volume of revolution about the y axis

WA 11 Volume of solid of revolution of region between $3+(-x^2+16x-28)^{.5}$ and $7-(-x^2+16x-39)^{.5}$ from 3.039 to 13 around the y axis

Unable to compute, although gave a picture. So we use shell method.

WA12 Integrate $2\pi x(3+(-x^2+16x-28)^{.5} - (7-(-x^2+16x-39)^{.5}))$ from 3.039 to 12.96

Answer: 2580.41

Observe how complicated the antiderivative is in this last example.

An alternative way to do this last one, would be to go back to the original region and divide it into two parts and rotate about the x axis. Do you see why this would give you the same answer.

WA5 Plot $(x-7)^2 + (y-8)^2 - 25=0$, $(x-3)^2 + (y-8)^2 - 36=0$ from -5 to 15

We need to know the points of intersection, in particular the x coordinate.

WA13 solve $(x-7)^2 + (y-8)^2 - 25=0$, $(x-3)^2 + (y-8)^2 - 36=0$

Answer: 6.375

Divide the little circle into two functions.

WA14 solve for y, $(x-7)^2 + (y-8)^2 - 25=0$

Find the volume of the solid of revolution of this first sub-region

WA15 volume of solid of revolution of region between $8 +(-x^2+14x-24)^{.5}$ and $8 -(-x^2+14x-24)^{.5}$ from 0 to 6.375 around the x axis

Answer: 1660.58

Now the second region.

WA16 solve for y, $(x-3)^2 + (y-8)^2 - 36=0$

WA17 volume of solid of revolution of region between $8 + (-x^2 + 6x + 27)^{.5}$ and $8 - (-x^2 + 6x + 27)^{.5}$ from 6.375 to 12 around the x axis

Answer: 919.83

Total Volume $1660.58 + 919.83 = 2580.41$

See WA12

So we see we can use either the disc method or shell method, whichever is easier.

In the old days, finding the antiderivative so we could apply the FTC and find the definite integral was also a very important consideration.

Now, WA eliminates this consideration.

Furthermore, WA will often just give you the answer directly and you don't even have to set up the disc or shell integrals.

However, you still need to graph the functions or the region and consider the proper limits and functions.

But, as you have seen WA even makes this easy compared to the old manual methods.

And, we used fairly simple quadratic examples here. WA works with virtually any functions, even those that would have been totally impractical to deal with classically.

C19E

Applications of Integration – Volume – Shell Method

Plot the following equations, then use the shell method and the “volume of solid of revolution of region” method to find the volume about the y-axis.

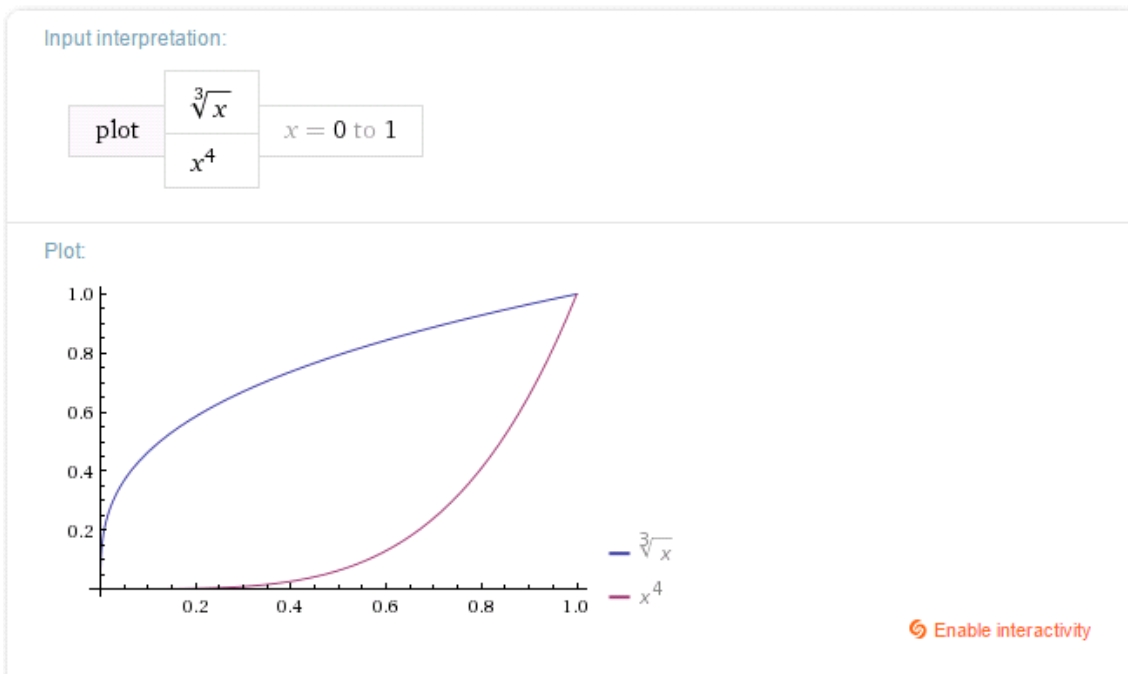
1. $f(x) = x^{1/3}$ and $g(x) = x^4$ from $x = 0$ to 1
2. $f(x) = x$ and $g(x) = x^2$ from $x = 0$ to 1
3. $f(x) = \cos(x)$ and $g(x) = \sin(x)$ from $x = 0$ to $\pi/4$
4. $f(x) = x^{1/2}$ and $g(x) = x^{1/3}$ from $x = 0$ to 1
5. $f(x) = 4 - x$ and $g(x) = 1$ from $x = 0$ to 3
6. $f(x) = 9 - x^2$ and $g(x) = 2x + 1$ from $x = 0$ to 2
7. $f(x) = 2\cos(x)$ and $g(x) = x$ from $x = 0$ to 1.02987
8. $f(x) = 4 + \sin(x)$ and $g(x) = 2 + \cos(x)$ from $x = 0$ to π
9. $f(x) = 2x$ and $g(x) = e^x$ from $x = 0$ to 2
10. $f(x) = 4 - x^2$ and $g(x) = x^2$ from $x = 0$ to 1

C19EA

Applications of Integration – Volume – Shell Method

Plot the following equations, then use the shell method and the “volume of solid of revolution of region” method to find the volume about the y-axis.

- $f(x) = x^{1/3}$ and $g(x) = x^4$ from $x = 0$ to 1
 WA plot $x^{1/3}$ and x^4 from $x = 0$ to 1



WA integrate $2\pi x((x^{1/3}) - (x^4))$ from $x = 0$ to 1

Definite integral:

$$\int_0^1 2\pi x(\sqrt[3]{x} - x^4) dx = \frac{11\pi}{21} \approx 1.6456$$

WA volume of region between $x^{1/3}$ and x^4 from 0 to 1 about the y axis

Input interpretation:

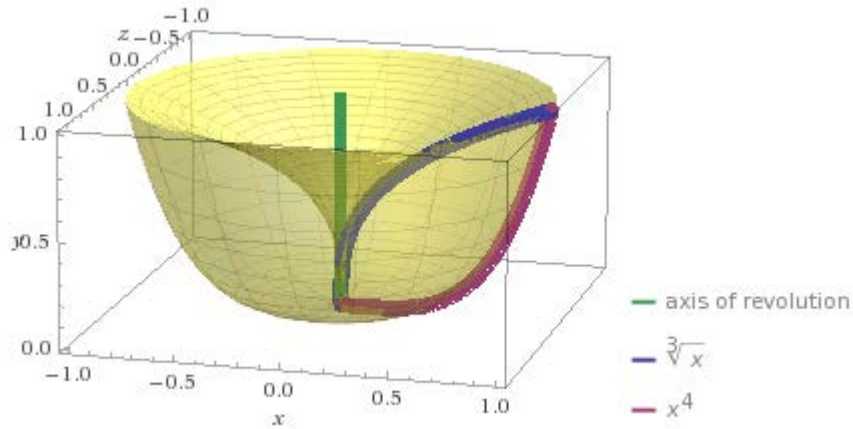
volume of revolved solid between $\sqrt[3]{x}$ $x = 0$ to 1 about the y-axis
 x^4

Result

More digits

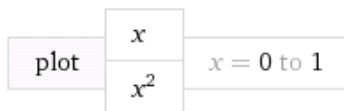
$$\int_0^1 2\pi x(\sqrt[3]{x} - x^4) dx = \frac{11\pi}{21} \approx 1.6456$$

Plot

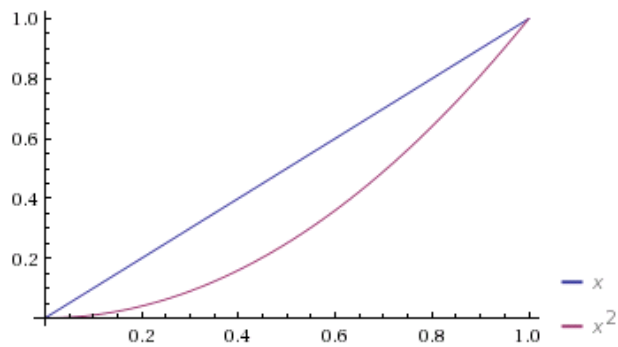


2. $f(x) = x$ and $g(x) = x^2$ from $x = 0$ to 1
WA plot x and x^2 from $x = 0$ to 1

Input interpretation:



Plot



Enable interactivity

WA integrate $2\pi x(x - x^2)$ from $x = 0$ to 1

Definite integral:

$$\int_0^1 2\pi x(x - x^2) dx = \frac{\pi}{6} \approx 0.52360$$

WA volume of solid of revolution of region between x and x^2 from 0 to 1 about the y axis

Input interpretation:

volume of revolved solid between

x

$x = 0$ to 1

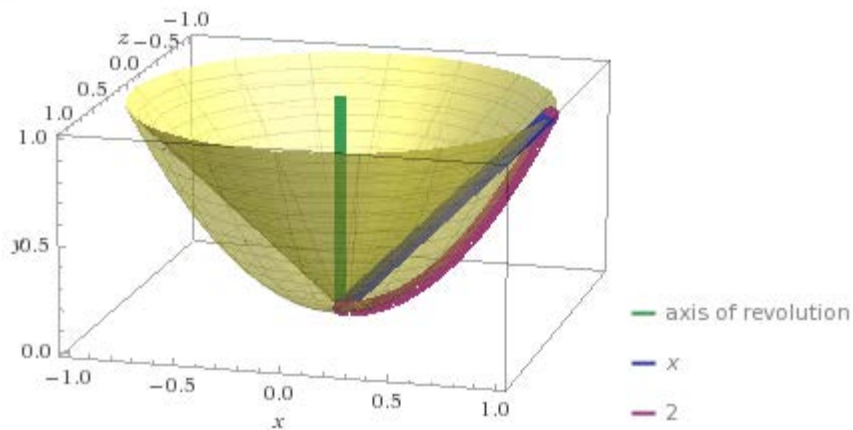
about the y -axis

x^2

Result

$$\int_0^1 2\pi x(x - x^2) dx = \frac{\pi}{6} \approx 0.523599$$

Plot



3. $f(x) = \cos(x)$ and $g(x) = \sin(x)$ from $x = 0$ to $\pi/4$
WA plot $\cos(x)$ and $\sin(x)$ from $x = 0$ to $\pi/4$

Input interpretation:

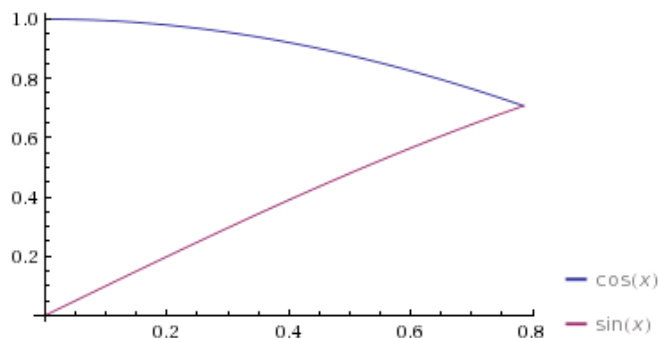
plot

$\cos(x)$

$\sin(x)$

$x = 0$ to $\frac{\pi}{4}$

Plot



[Enable interactivity](#)

WA integrate $2\pi x(\cos(x) - \sin(x))$ from $x = 0$ to $\pi/4$

Definite integral:

$$\int_0^{\pi/4} 2\pi x (\cos(x) - \sin(x)) dx = \frac{1}{2} \pi (\sqrt{2} \pi - 4) \approx 0.69568$$

WA volume of solid of revolution of region between $\cos(x)$ and $\sin(x)$ from 0 to $\pi/4$ about the y axis

Input interpretation:

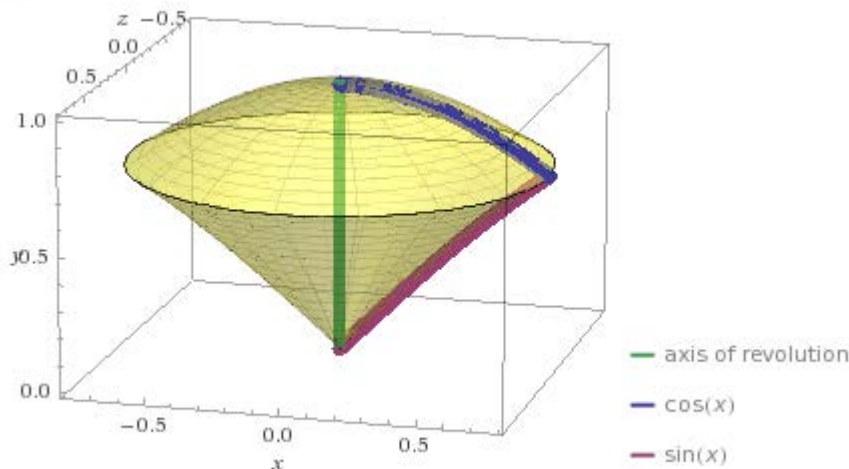
volume of revolved solid between	$\cos(x)$	$x = 0$ to $\frac{\pi}{4}$	about the y -axis
	$\sin(x)$		

Result

$$\int_0^{\pi/4} 2\pi x |\cos(x) - \sin(x)| dx = 0.695679$$

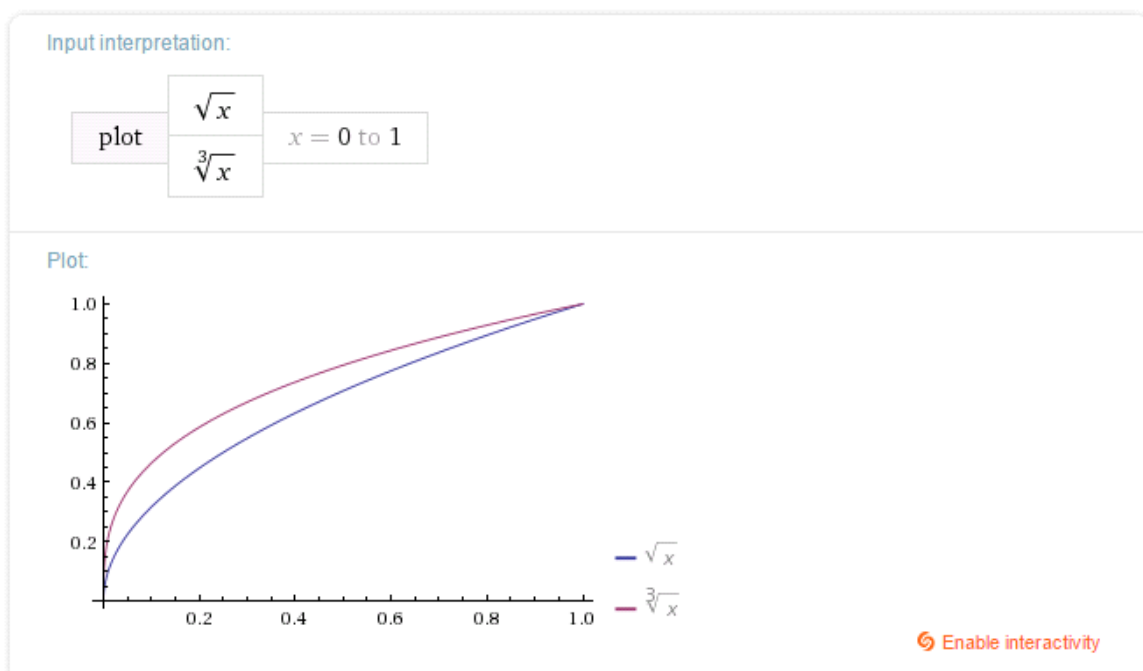
$|z|$ is the absolute value of z

Plot



4. $f(x) = x^{1/2}$ and $g(x) = x^{1/3}$ from $x = 0$ to 1

WA plot $x^{1/2}$ and $x^{1/3}$ from $x = 0$ to 1



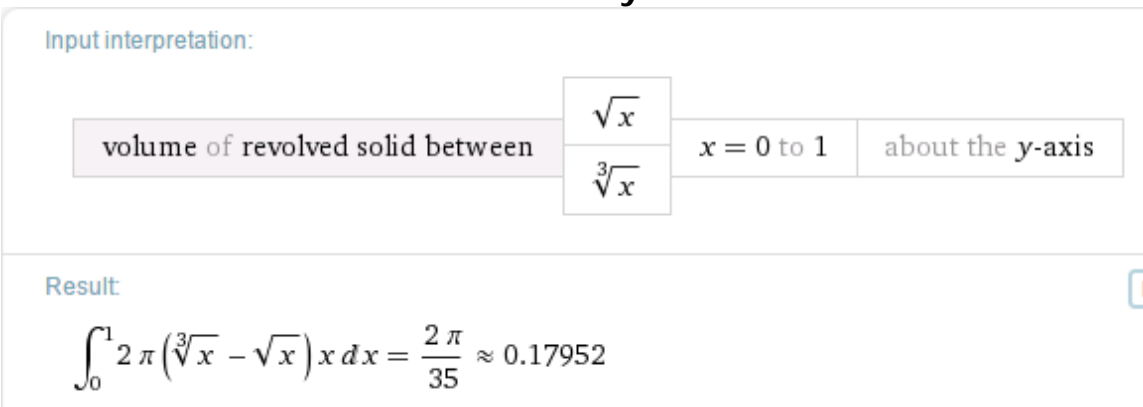
WA integrate $2\pi x((x^{1/2})-(x^{1/3}))$ from $x = 0$ to 1

Definite integral:

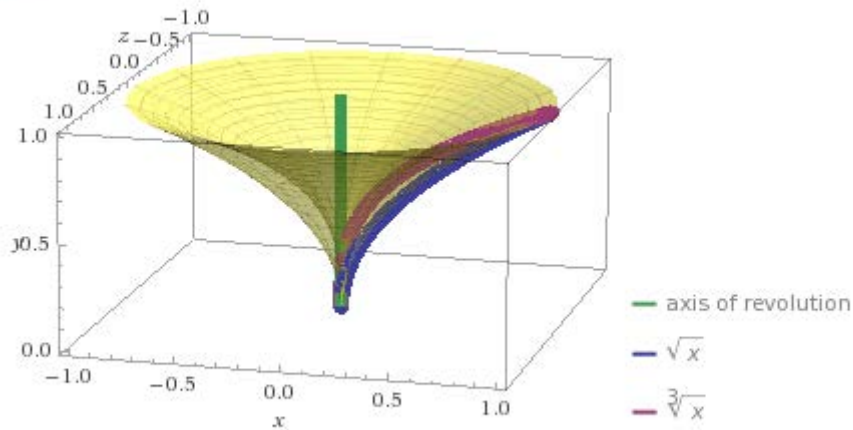
$$\int_0^1 2\pi x(\sqrt{x} - \sqrt[3]{x}) dx = -\frac{2\pi}{35} \approx -0.17952$$

Note: adjust for the negative value by switching the order of the functions $f(x)$ and $g(x)$ appropriately within the integral

WA volume of solid of revolution of region between $x^{1/2}$ and $x^{1/3}$ from 0 to 1 about the y-axis

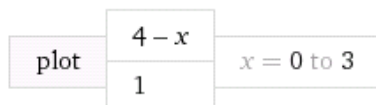


Plot

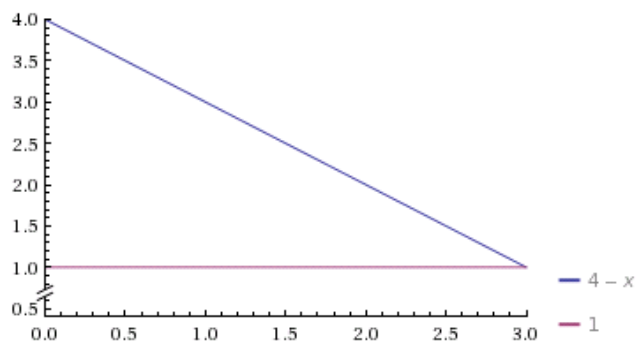


5. $f(x) = 4 - x$ and $g(x) = 1$ from $x = 0$ to 3
WA plot $4 - x$ and 1 from $x = 0$ to 3

Input interpretation:



Plot



[Enable interactivity](#)

WA integrate $2\pi x((4 - x) - (1))$ from $x = 0$ to 3

Definite integral:

$$\int_0^3 2\pi x((4 - x) - 1) dx = 9\pi \approx 28.274$$

WA volume of solid of revolution of region between $4 - x$ and 1
from 0 to 3 about the y axis

Input interpretation:

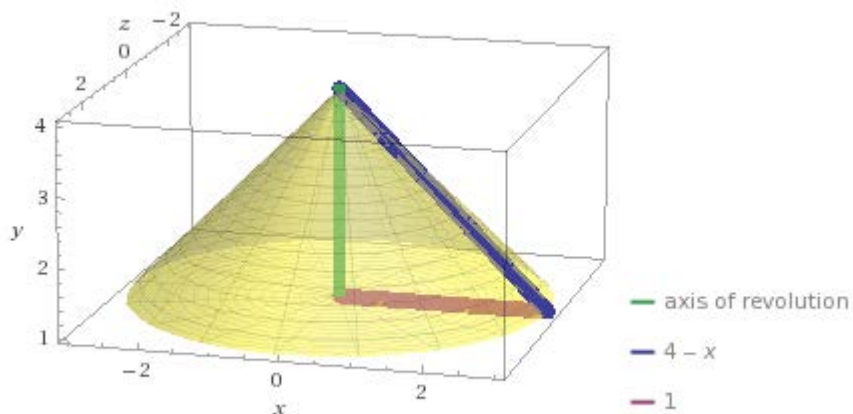
volume of revolved solid between $4 - x$ $x = 0$ to 3 about the y -axis
 1

Result

More digits

$$\int_0^3 2\pi(3-x)x dx = 9\pi \approx 28.2743$$

Plot

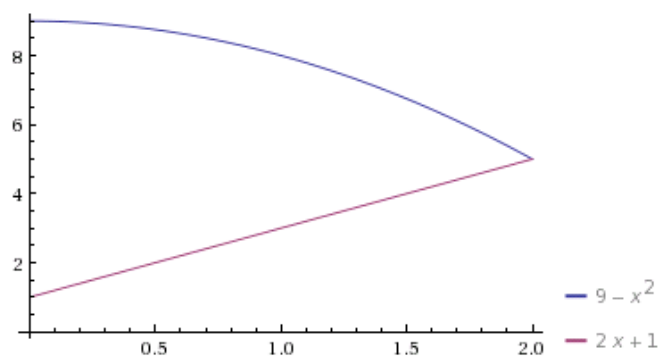


6. $f(x) = 9 - x^2$ and $g(x) = 2x + 1$ from $x = 0$ to 2
WA plot $9 - x^2$ and $2x + 1$ from $x = 0$ to 2

Input interpretation:

plot $9 - x^2$ $x = 0$ to 2
 $2x + 1$

Plot



Enable interactivity

WA integrate $2\pi x((9 - x^2) - (2x + 1))$ from $x = 0$ to 2

Definite integral:

$$\int_0^2 2\pi x((9 - x^2) - (2x + 1)) dx = \frac{40\pi}{3} \approx 41.888$$

WA volume of solid of revolution of region between $9 - x^2$ and $2x + 1$ from 0 to 2 about the y axis

Input interpretation:

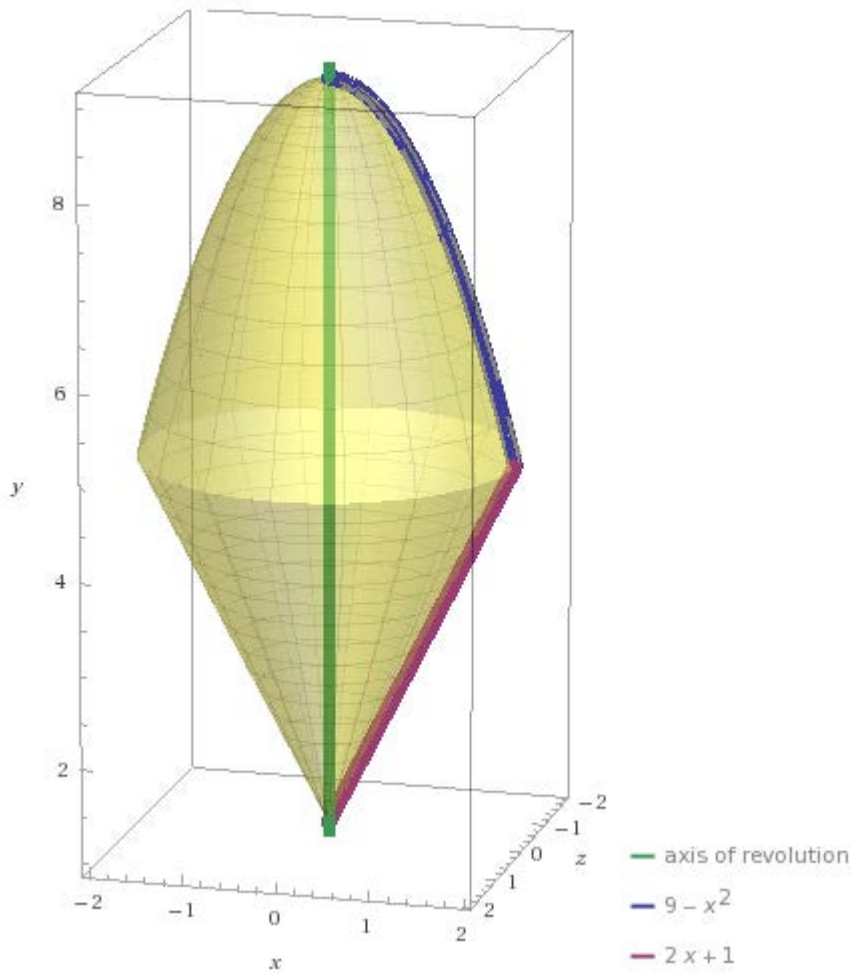
volume of revolved solid between	$9 - x^2$	$x = 0$ to 2	about the y-axis
	$2x + 1$		

Result

[More digits](#)

$$\int_0^2 2\pi x(8 - 2x - x^2) dx = \frac{40\pi}{3} \approx 41.8879$$

Plot

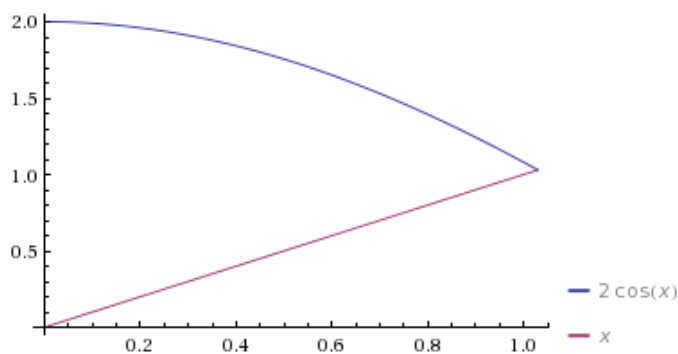


7. $f(x) = 2\cos(x)$ and $g(x) = x$ from $x = 0$ to 1.02987
WA plot $2\cos(x)$ and x from $x = 0$ to 1.02987

Input interpretation:

plot	$2 \cos(x)$	$x = 0$ to 1.02987
	x	

Plot



[Enable interactivity](#)

WA integrate $2\pi x((2\cos(x)) - (x))$ from $x = 0$ to 1.02987

Definite integral:

$$\int_0^{1.02987} 2\pi x (2\cos(x) - x) dx = 2.71076$$

WA volume of solid of revolution of region between $2\cos(x)$ and x from 0 to 1.02987 about the y axis

Input interpretation:

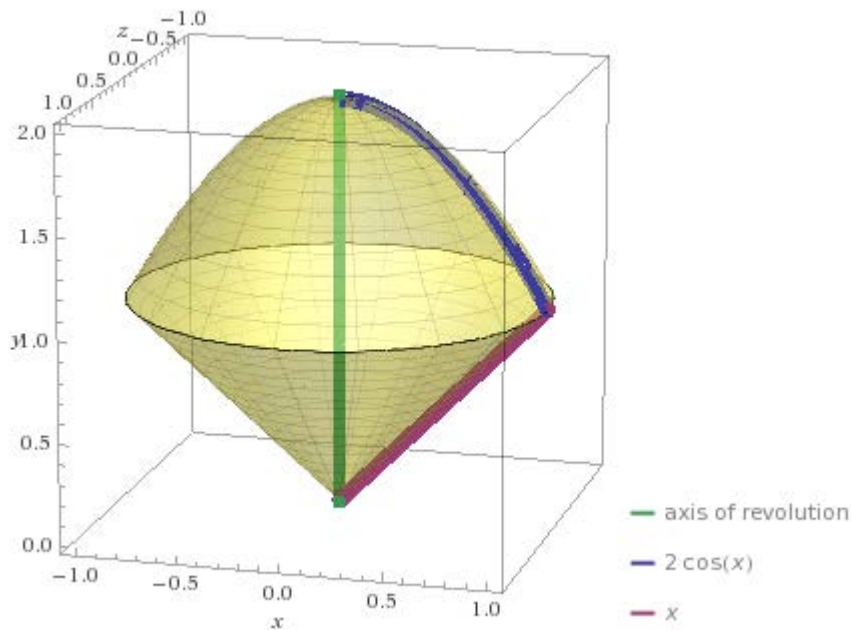
volume of revolved solid between	$2 \cos(x)$	$x = 0$ to 1.02987	about the y -axis
	x		

Result

$$\int_0^{1.02987} 2\pi x |-x + 2\cos(x)| dx = 2.71076$$

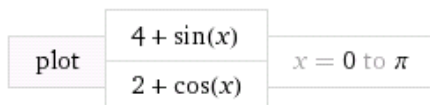
$|z|$ is the absolute value of z

Plot

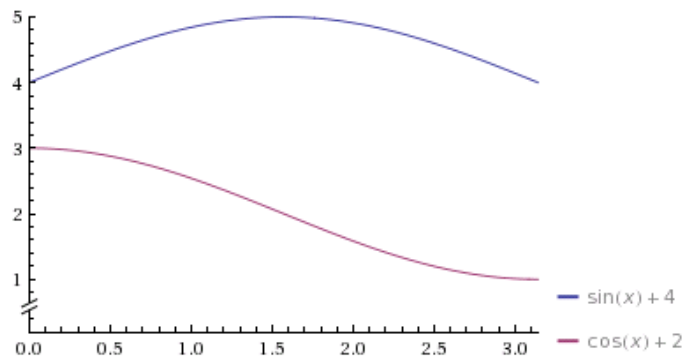


8. $f(x) = 4 + \sin(x)$ and $g(x) = 2 + \cos(x)$ from $x = 0$ to π
WA plot $4 + \sin(x)$ and $2 + \cos(x)$ from $x = 0$ to π

Input interpretation:



Plot



[Enable interactivity](#)

WA integrate $2\pi x((4 + \sin(x)) - (2 + \cos(x)))$ from $x = 0$ to π

Definite integral:

[More digits](#)

[Step-by](#)

$$\int_0^{\pi} 2\pi x((4 + \sin(x)) - (2 + \cos(x))) dx = 2\pi(2 + \pi + \pi^2) \approx 94.318$$

WA volume of solid of revolution of region between $4 + \sin(x)$ and $2 + \cos(x)$ from 0 to π about the y-axis

Input interpretation:

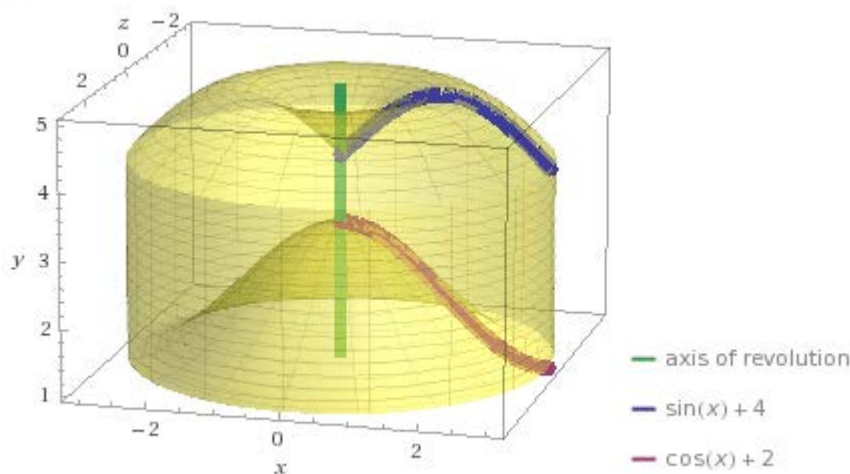
volume of revolved solid between	$4 + \sin(x)$	$x = 0$ to π	about the y-axis
	$2 + \cos(x)$		

Result

[More digits](#)

$$\int_0^{\pi} 2\pi x (2 - \cos(x) + \sin(x)) dx = 2\pi (2 + \pi + \pi^2) \approx 94.3181$$

Plot

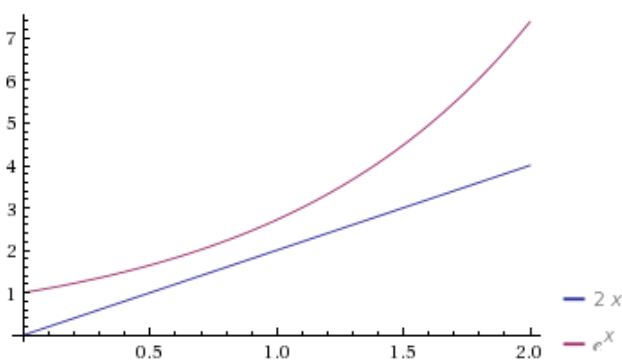


9. $f(x) = 2x$ and $g(x) = e^x$ from $x = 0$ to 2
WA plot $2x$ and e^x from $x = 0$ to 2

Input interpretation:

plot	$2x$	$x = 0$ to 2
	e^x	

Plot



[Enable interactivity](#)

WA integrate $2\pi x(2x - e^x)$ from $x = 0$ to 2

Definite integral:

$$\int_0^2 2\pi x(2x - e^x) dx = \left(\frac{26}{3} - 2e^2\right)\pi \approx -19.200$$

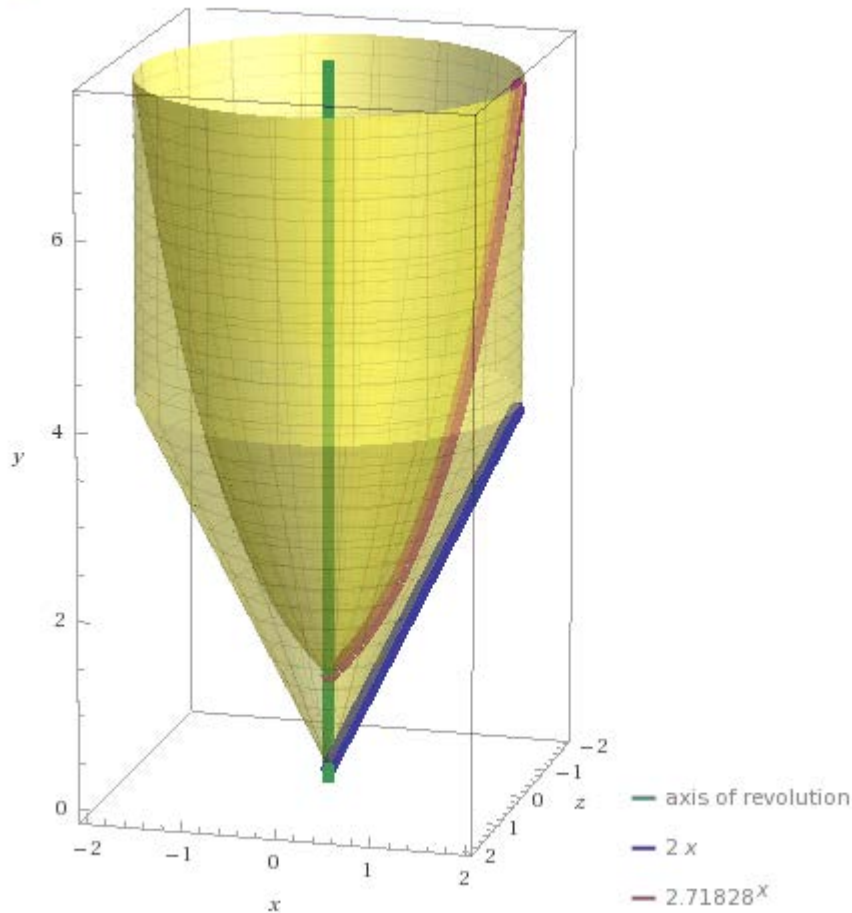
NOTE: flip the negative

WA volume of solid of revolution of region between $2x$ and e^x from 0 to 2 about the y -axis

Input interpretation:

volume of revolved solid between	$2x$	$x = 0$ to 2	about the y -axis
	e^x		

Plot:

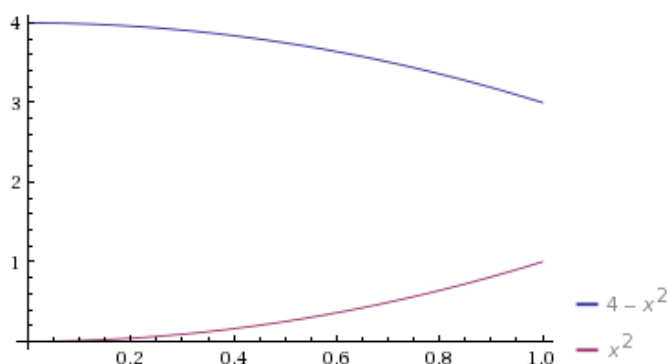


10. $f(x) = 4 - x^2$ and $g(x) = x^2$ from $x = 0$ to 1
WA plot $4 - x^2$ and x^2 from $x = 0$ to 1

Input interpretation:

plot	$4 - x^2$	$x = 0$ to 1
	x^2	

Plot



[Enable interactivity](#)

WA integrate $2\pi x((4 - x^2) - (x^2))$ from $x = 0$ to 1

Definite integral:

$$\int_0^1 2\pi x((4 - x^2) - x^2) dx = 3\pi \approx 9.4248$$

WA volume of solid of revolution of region between $4 - x^2$ and x^2 from 0 to 1 about the y -axis

Input interpretation:

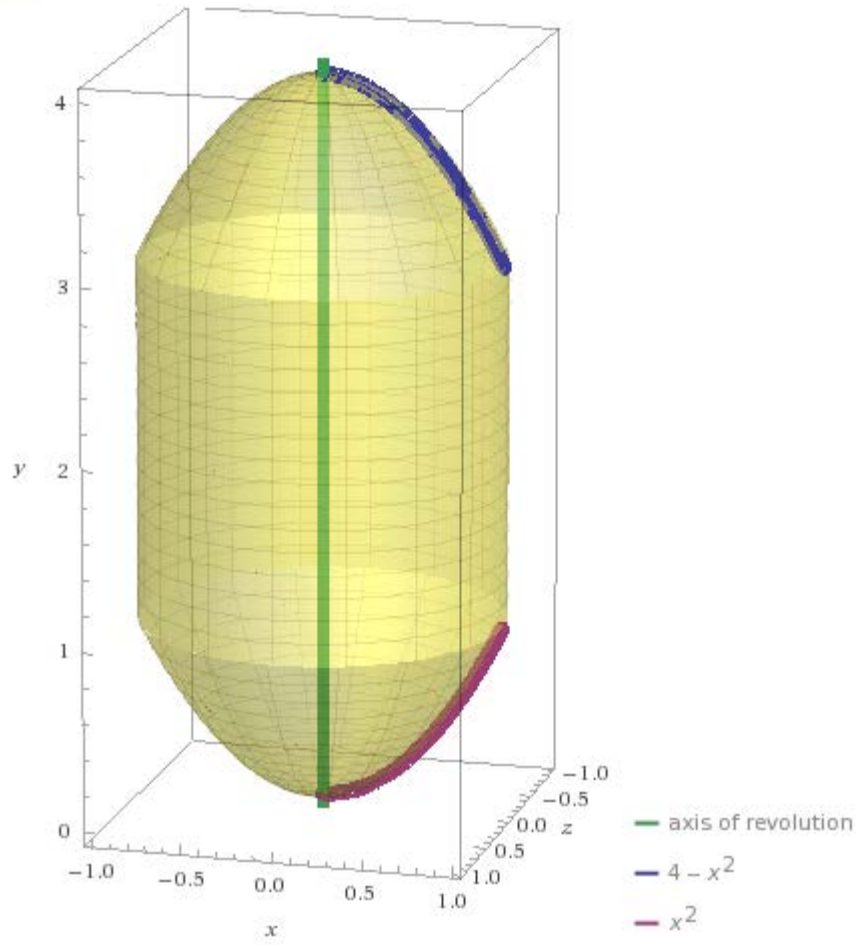
volume of revolved solid between	$4 - x^2$	$x = 0$ to 1	about the y -axis
	x^2		

Result

[More digits](#)

$$\int_0^1 2\pi x(4 - 2x^2) dx = 3\pi \approx 9.42478$$

Plot



C20 LESSON: Applications of Integration – Surface of Revolution

Let $f(x)$ be a differentiable function from a to b .

Rotate the graph of $f(x)$ about the x axis.

What is the surface area of this solid of revolution?

Area = Integral $2\pi f(x)[1 + (f'(x))^2]^{1/2}dx$ from a to b

Why? See diagram which you should draw.

Note: We slice the surface into little slices. Then we compute the area of the slice.

$2\pi f(x)$ is the radius of slice from the x axis, and

$[1 + (f'(x))^2]^{1/2}dx$ is the length of the little piece of the slice. See the diagram.

So, $2\pi f(x)[1 + (f'(x))^2]^{1/2}dx$ is the area of this little slice.

The Integral adds them all up.

Do you see the similarity with the arc length formula?

It is good to start with a surface of revolution we already know the answer to, a sphere whose surface area is 4π .

Example 1. The surface area of the sphere of radius 1?

$$f(x) = (1 - x^2)^{1/2} \text{ and } f'(x) = -x(1 - x^2)^{-1/2}$$

$$\text{and } [1 + (f'(x))^2]^{1/2} = [1 + (-x(1 - x^2)^{-1/2})^2]^{1/2} =$$

$$[1 + x^2(1 - x^2)^{-1}]^{1/2} = [1 - x^2]^{-1/2}$$

$$\text{So, } 2\pi \int f(x)[1 + (f'(x))^2]^{1/2} dx =$$

$$= 2\pi \int (1 - x^2)^{1/2} [1 - x^2]^{-1/2} dx = 2\pi \int dx$$

So, the surface area of the sphere is just

Integral of $2\pi dx$ from -1 to 1

Now, this was a lot of work setting up the integral, and then easy to do the integration.

WA1 Integrate 2π , from $x = -1$ to 1

Could WA have made this easier?

Of course!

WA2 surface of revolution $(1-x^2)^{.5}$ from $x = -1$ to 1

And, we get the picture of the surface of the sphere

Example 2. The surface area of a paraboloid which is the surface of revolution of $f(x) = x^2$ from 1 to 4 .

WA3 surface of revolution x^2 from $x = 1$ to 4

Notice the graph, and also it told us the volume too.

Well, I'll admit this takes out the fun and frustrates all the classical calculus courses. So let's play the game.

Integral $2\pi f(x)[1 + (f'(x))^2]^{1/2} dx$ from 1 to 4

$f'(x) = 2x$, so

Integral $2\pi x^2[1 + 4x^2]^{1/2}$ from 1 to 4

WA4 Integrate $2\pi x^2(1 + 4x^2)^{.5}$ from $x = 1$ to 4

Well, we got the same answer: 812.76

Notice, how much fun must it have been to find this anti-derivative. Just look at it!

In the old classical days, this would have been a very challenging problem.

Easy to set up the integral, but difficult to find the antiderivative.

Also, Notice there is no nice 3D graph.

Example 3. Surface area of the solid of revolution of $\sin(x)$ from $x = 0$ to π .

WA5 surface of revolution $\sin(x)$ from $x= 0$ to π

Answer: 14.426 Also, Volume is 4.9348

If you are a glutton for punishment, then do it the classical way.

$f'(x) = \cos(x)$

Integral $2\pi \sin(x)[1 + (\cos(x))^2]^{1/2}$ from 0 to π

WA6 integrate $2\pi \sin(x)(1+(\cos(x))^2)^{.5}$ from $x = 0$ to π

Easy to set up the integral,

But, wouldn't it be fun to find that anti-derivative!

Our classical ancestors must have had so much fun!

Do you see why students who have to learn calculus the classical way have so much difficulty?

Frankly, until tools like WA came along, calculus was a tool that was often very difficult to use, or in many cases impossible when one couldn't find an anti-derivative.

It often forced scientist and engineers to build mathematical models that were simplistic approximations just so they could solve the calculus, or Diff Eq, problems.

C20E

Applications of Integration – Surface of Revolution

Find the surface for the following functions, rotated about the x-axis.

1. $f(x) = \sin(x) + \sin^2(x)$ from $x = 0$ to 2π .

2. $f(x) = e^x$ from $x = 1$ to 3 .

3. $f(x) = (x-1)/(x^2 + x)$ from $x = 1$ to 5 .

4. $f(x) = \sin(2x) + \sin(x)$ from $x = 0$ to 2π .

5. $f(x) = e^x - e^{-x}$ from $x = -3$ to 3 .

6. $f(x) = 3x^3$ from $x = -2$ to 2 .

7. $f(x) = \sin(2x)$ from $x = 0$ to 2π .

8. $f(x) = \cos(3x) - \sin(2x)$ from $x = 0$ to π .

9. $f(x) = e^x + x$ from $x = 0$ to 2 .

10. $f(x) = 2x - e^{x^2}$ from $x = -1$ to 1 .

C20EA

Applications of Integration – Surface of Revolution

Find the surface for the following functions, rotated about the x-axis.

1. $f(x) = \sin(x) + \sin^2(x)$ from $x = 0$ to 2π .

WA surface of revolution $\sin(x) + \sin^2(x)$ from $x = 0$ to 2π

Area of surface:

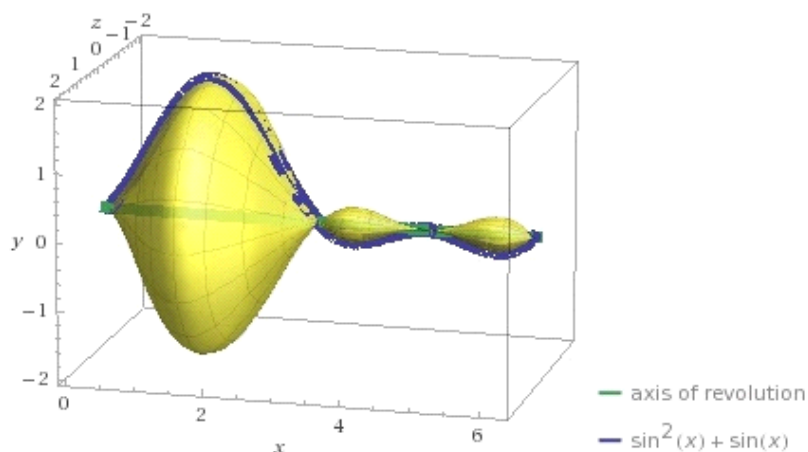
$$\int_0^{2\pi} 2\pi |\sin(x)(1 + \sin(x))| \sqrt{1 + (\cos(x) + 2\cos(x)\sin(x))^2} dx = 37.7748$$

$|z|$ is the absolute value of z

Volume of solid:

$$\int_0^{2\pi} \pi \sin^2(x) (1 + \sin(x))^2 dx = \frac{7\pi^2}{4} \approx 17.2718$$

Plot



2. $f(x) = e^x$ from $x = 1$ to 3 .

WA surface of revolution e^x from $x = 1$ to 3

Area of surface:

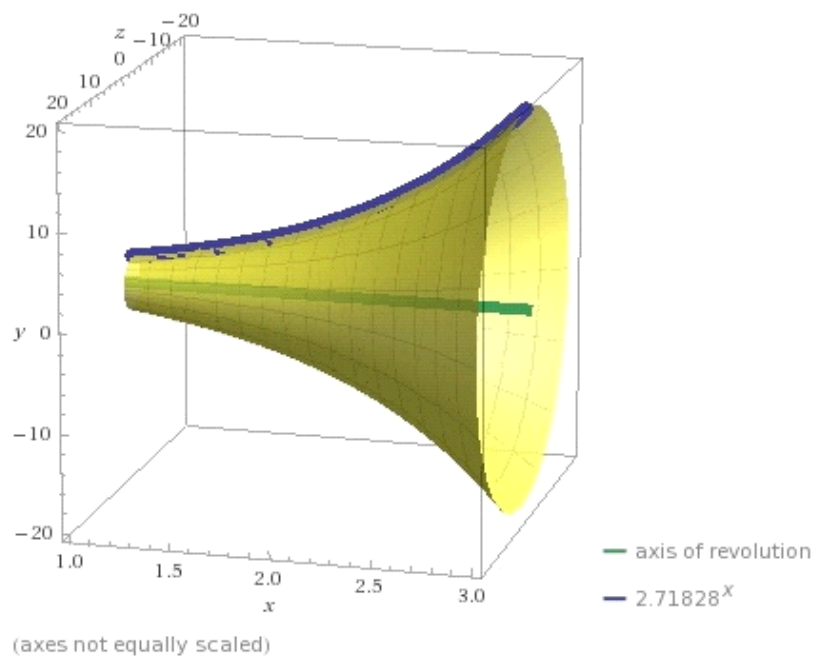
$$\int_1^3 2 e^{\operatorname{Re}(x)} \sqrt{1 + e^{2x}} \pi dx = 1250.43$$

$\operatorname{Re}(z)$ is the real part of z

Volume of solid:

$$\int_1^3 e^{2x} \pi dx = \frac{1}{2} e^2 (e^4 - 1) \pi \approx 622.098$$

Plot



3. $f(x) = (x-1)/(x^2 + x)$ from $x = 1$ to 5 .

WA surface of revolution $(x - 1)/(x^2 + x)$ from $x = 1$ to 5

Area of surface:

$$\int_1^5 2\pi \sqrt{1 + \frac{(-1 - 2x + x^2)^2}{x^4(1+x)^4}} \left| \frac{-1+x}{x+x^2} \right| dx = 3.70144$$

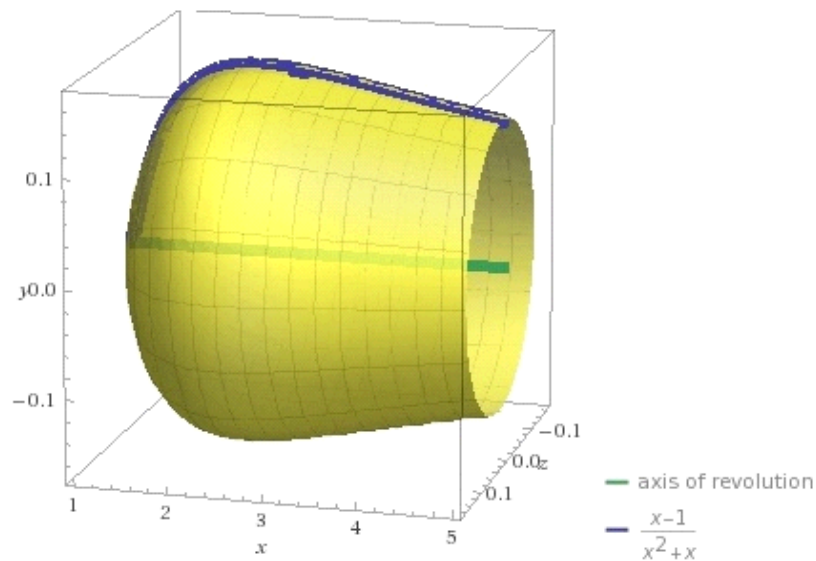
$|z|$ is the absolute value of z

Volume of solid:

$$\int_1^5 \frac{\pi (-1+x)^2}{(x+x^2)^2} dx = \pi \left(\frac{32}{15} - \log\left(\frac{625}{81}\right) \right) \approx 0.28284$$

$\log(x)$ is the natural logarithm

Plot:



(axes not equally scaled)

4. $f(x) = \sin(2x) + \sin(x)$ from $x = 0$ to 2π .

WA surface of revolution $\sin(2x) + \sin(x)$ from $x = 0$ to 2π

Area of surface:

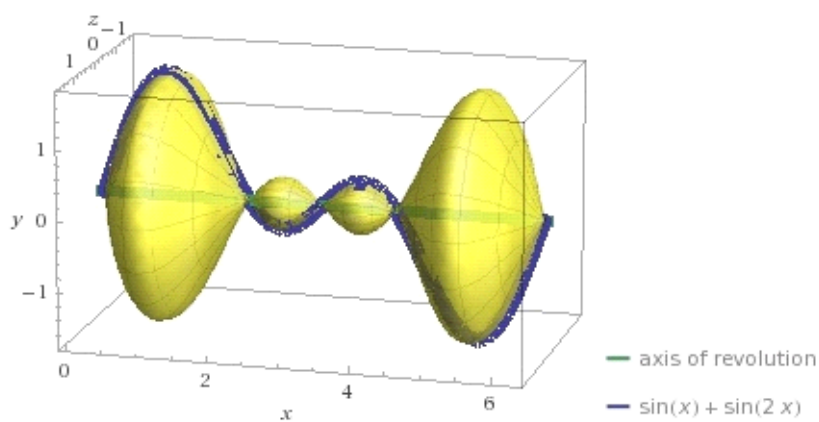
$$\int_0^{2\pi} 2\pi |\sin(x) + \sin(2x)| \sqrt{1 + (\cos(x) + 2\cos(2x))^2} dx = 53.8654$$

$|z|$ is the absolute value of z

Volume of solid:

$$\int_0^{2\pi} \pi (\sin(x) + \sin(2x))^2 dx = 2\pi^2 \approx 19.7392$$

Plot:



5. $f(x) = e^x - e^{-x}$ from $x = -3$ to 3 .

WA surface of revolution $e^x - e^{-x}$ from $x = -3$ to 3

Area of surface:

$$\int_{-3}^3 2\sqrt{3 + e^{-2x} + e^{2x}} \pi |-e^{-x} + e^x| dx = 2536.59$$

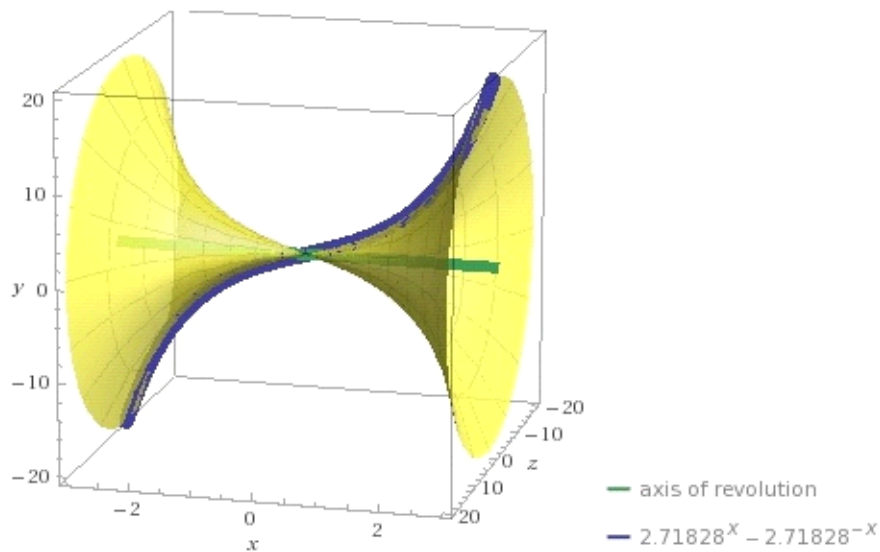
$|z|$ is the absolute value of z

Volume of solid:

$$\int_{-3}^3 (-e^{-x} + e^x)^2 \pi dx = 2\pi (\sinh(6) - 6) \approx 1229.7$$

$\sinh(x)$ is the hyperbolic sine function

Plot



(axes not equally scaled)

6. $f(x) = 3x^3$ from $x = -2$ to 2 .

WA surface of revolution $3x^3$ from $x = -2$ to 2

Area of surface:

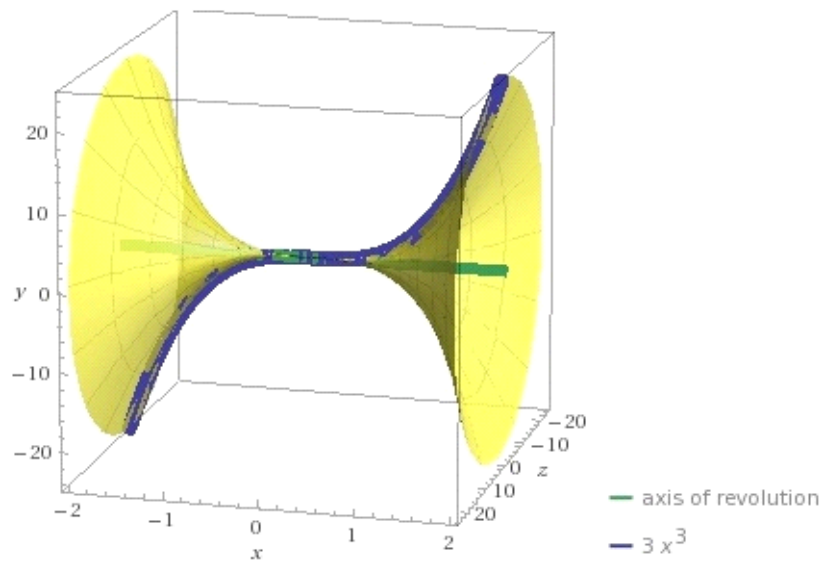
$$\int_{-2}^2 6\pi \sqrt{1 + 81x^4} |x|^3 dx = \frac{2}{81} (1297\sqrt{1297} - 1)\pi \approx 3623.23$$

$|z|$ is the absolute value of z

Volume of solid:

$$\int_{-2}^2 9\pi x^6 dx = \frac{2304\pi}{7} \approx 1034.03$$

Plot:



(axes not equally scaled)

7. $f(x) = \sin(2x)$ from $x = 0$ to 2π .

WA surface of revolution $\sin(2x)$ from $x = 0$ to 2π

Area of surface:

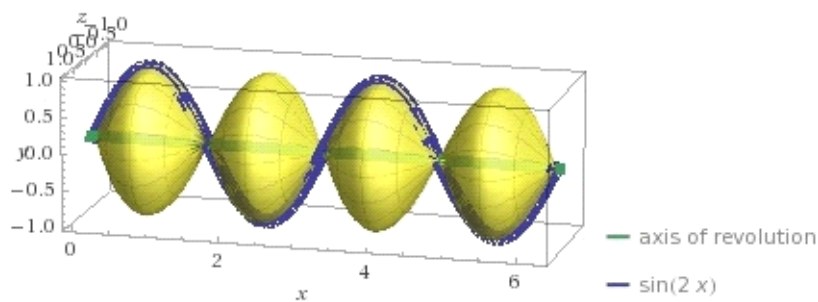
$$\int_0^{2\pi} 2\pi |\sin(2x)| \sqrt{3 + 2\cos(4x)} dx = 37.1699$$

$|z|$ is the absolute value of z

Volume of solid:

$$\int_0^{2\pi} \pi \sin^2(2x) dx = \pi^2 \approx 9.8696$$

Plot:



8. $f(x) = \cos(3x) - \sin(2x)$ from $x = 0$ to π .

WA surface of revolution $\cos(3x) - \sin(2x)$ from $x = 0$ to π

Area of surface:

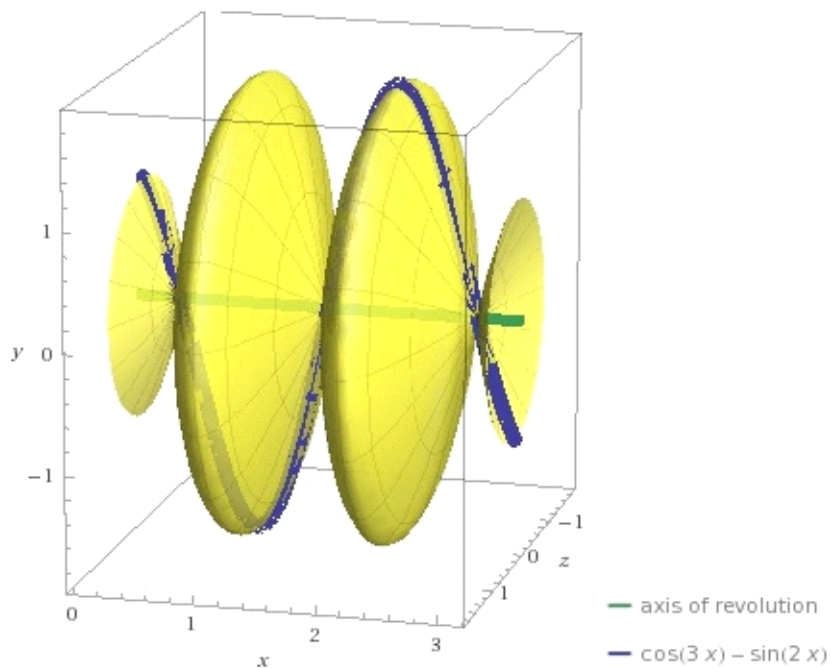
$$\int_0^{\pi} 2\pi |\cos(3x) - \sin(2x)| \sqrt{1 + (2\cos(2x) + 3\sin(3x))^2} dx = 57.7173$$

$|z|$ is the absolute value of z

Volume of solid:

$$\int_0^{\pi} \pi (\cos(3x) - \sin(2x))^2 dx = \pi \left(\frac{8}{5} + \pi \right) \approx 14.8962$$

Plot



9. $f(x) = e^x + x$ from $x = 0$ to 2 .

WA surface of revolution $e^x + x$ from $x = 0$ to 2

Area of surface:

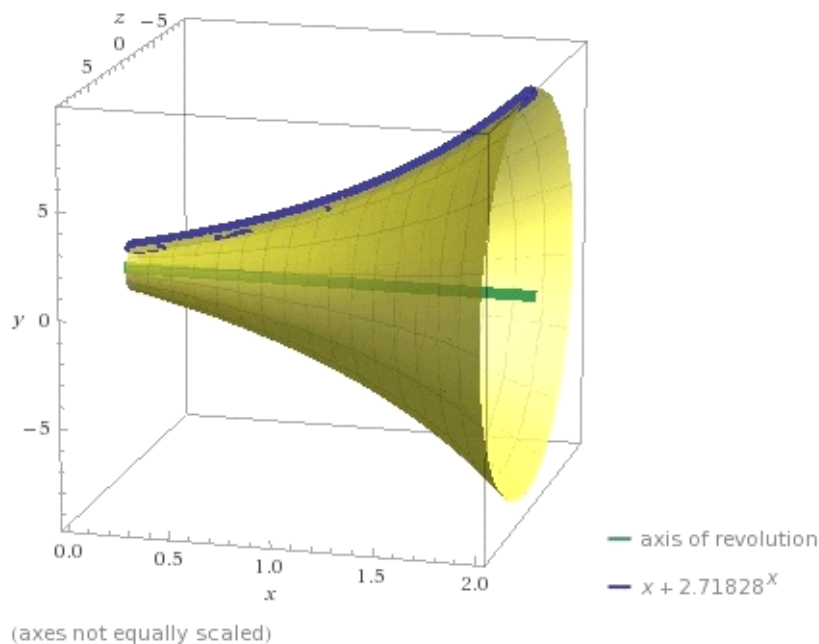
$$\int_0^2 2\sqrt{1+(1+e^x)^2} \pi |e^x + x| dx = 279.572$$

$|z|$ is the absolute value of z

Volume of solid:

$$\int_0^2 \pi (e^x + x)^2 dx = \frac{1}{6} (25 + 12e^2 + 3e^4) \pi \approx 145.279$$

Plot:



10. $f(x) = 2x - e^{x^2}$ from $x = -1$ to 1 .

WA surface of revolution $2x - e^{x^2}$ from $x = -1$ to 1

Area of surface:

$$\int_{-1}^1 2\pi \sqrt{1 + (2 - 2e^{x^2}x)^2} |-e^{x^2} + 2x| dx = 74.2442$$

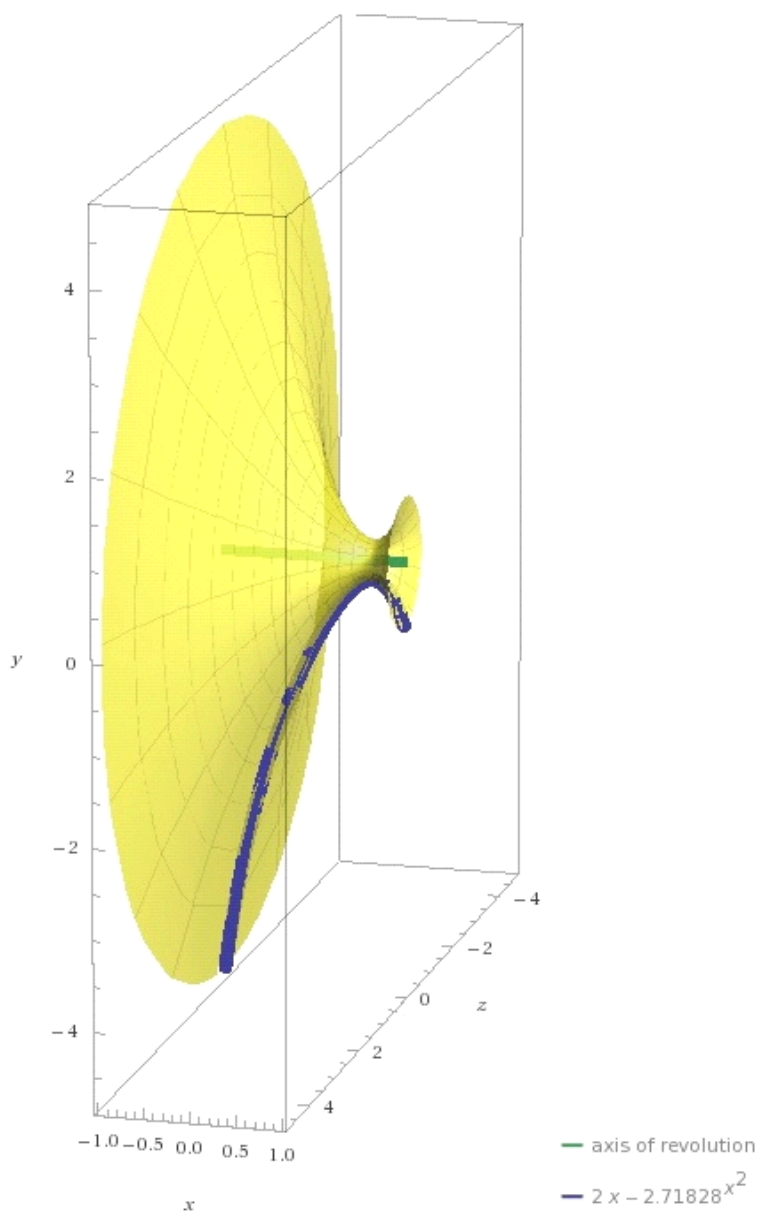
$|z|$ is the absolute value of z

Volume of solid:

$$\int_{-1}^1 \pi (-e^{x^2} + 2x)^2 dx = \pi \left(\sqrt{\frac{\pi}{2}} \operatorname{erfi}(\sqrt{2}) + \frac{8}{3} \right) \approx 23.2339$$

$\operatorname{erfi}(x)$ is the imaginary error function

Plot



C21 LESSON: Parametric Functions

By definition the graph of $y = f(x)$ can have only one point on any vertical line. That is, $f(x)$ is a unique number for any x .

This creates a problem when we want to analyze a graph which folds back on itself, which is often the case.

For example, the graph of $y^2 = x$, which is a parabola.

WA1 Plot $y^2=x$ from $x = 0$ to 2

Of course, in this case it can be represented as two different functions. $y = x^{1/2}$ and $y = -x^{1/2}$

WA2 Plot $x^{.5}, -x^{.5}$ from $x=0$ to 2

But, there is another way to handle this,

Parametric Functions.

Let t be the independent variable ranging from a to b .

Graph $(f(t),g(t))$ from $(f(a),g(a))$ to $(f(b),g(b))$ in the x - y plane. t is called a parameter.

In this example, let $f(t)=t^2$ and $g(t)=t$ and $-2 < t < 2$

Why? $(x,y) \equiv (y^2,y) \equiv (t^2, t)$ when $t = y$

WA3 Parametric Plot (t^2,t)

WA4 Parametric Plot (t^2,t) from $t = -2$ to 2

Note: WA also gave us the arc length. We will discuss this in a later lesson in detail.

Ok, now let's look at another familiar example, the circle of radius R centered at the origin.

The graph of $x^2 + y^2 = R^2$ can be split into two functions representing the upper semicircle and lower semicircle as you well know. $y = (R^2 - x^2)^{1/2}$ and $y = -(R^2 - x^2)^{1/2}$

You also know that if the parameter t , representing angles in radian measure is utilized, then any point (x, y) on the circle t radians from the positive x axis can also be represented by trig functions. $(x,y) = (R\cos(t), R\sin(t))$

So we can now deal with the circle with a parametric representation. Let's say $R = 7$

WA5 Parametric Plot (7cos(t),7sin(t))

Ok, let's check the arc length. $2\pi 7 = 14\pi$

WA6 Parametric Plot (7cos(t),7sin(t)) from t =0 to 2Pi

You might want to pause and try some other circles, and even ellipses yourself now.

OK, now what extra abilities do parametric representations give us?

The answer is that we can now deal with much more complex graphs. This was not of too much use classically, since it was so laborious to plot a parametric graph.

But, with a tool like WA it is now very easy.

WA7 Parametric Plot ($t^4 - 3t^2, t$)

Note: if $y = t$, then $x = y^4 - 3y^2$ is what we plotted.

Imagine how difficult this would be to split up into ordinary functions. You would have to solve a 4th degree polynomial in y to get functions in terms of x .

With Parametric Functions we can get some really interesting graphs that would be essentially impossible with just regular $y = f(x)$ functions.

WA8 Parametric Plot ($t + 2\sin(2t), t + 2\cos(5t)$)

But, we can control the parameter limits

WA9 Parametric Plot $(t + 2\sin(2t), t + 2\cos(5t))$ from $t = -5\pi$ to 5π

Imagine trying to handle this with regular functions.

Note: The Arc Length is also calculated here too. In the next lesson we will look at how this is done.

Now, the facts are that you can take a whole course involving parametric representations of curves, and higher dimensional surfaces.

This is used extensively in modern Computer Aided Design (CAD) systems.

Obviously, it has applications in the arts.

And, it can be used in animation systems to create very entertaining animations.

So, play with the WA and try lots of things for yourself.

Then, as you proceed with your career you may learn much more about the applications of this wonderful "technology".

Here are a few more just for fun.

WA10 Parametric Plot $(1.5\cos(t) - \cos(30t), 1.5\sin(t) - \sin(30t))$ from $t = 0$ to 2π

Note: The various coefficients make a huge difference in the graphs. And, you can play with these as well as the various functions to get all kinds of results. Usually, you will just have to experiment to see what happens. It is very difficult, at least for me, to predict what the curve will look like, at least until I do some experimentation.

WA11 Parametric Plot $(1.5\cos(2t) - 2\cos(30t), 2.5\sin(t) - \sin(15t))$ from $t = 0$ to 2π

WA12 Parametric Plot $(1.5\cos(10t) - \cos(30t), 1.5\sin(t) - \sin(30t))$ from $t = 0$ to 2π

Gee. Look what changing the 2 to 10 did.

WA13 Parametric Plot $(1.5\cos(2t) - \cos(30t), 1.5\sin(10t) - \sin(30t))$ from $t = 0$ to 2π

Just changed 1 to 10

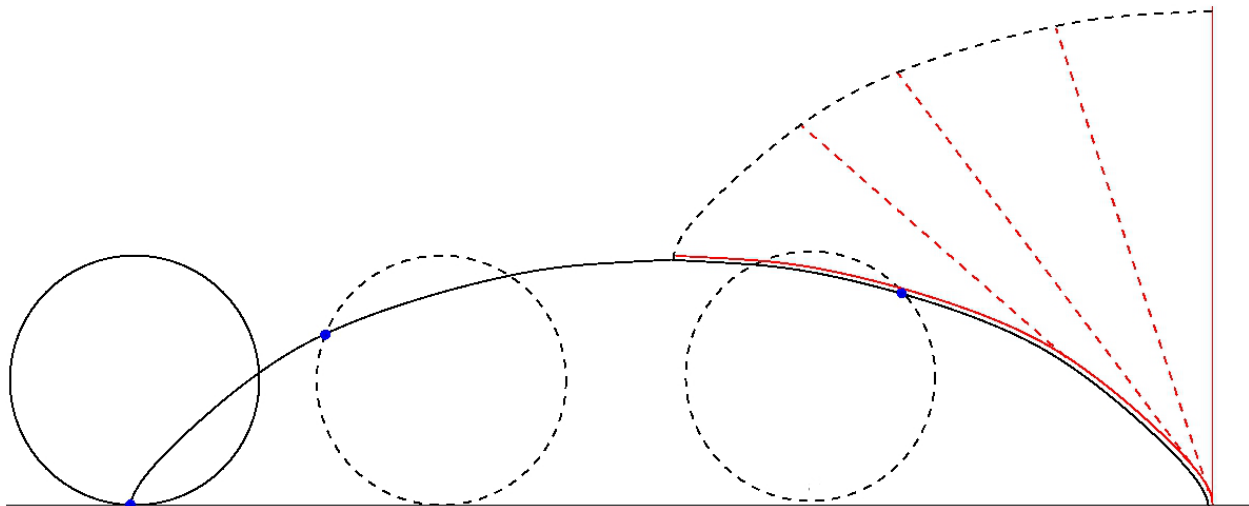
Just imagine how much fun our ancestors would have had playing with such a tool as WA or Mathematica. Well, we have such a tool. Learn it well.

Add in animation and color and 3D capabilities, which Mathematica does, and you have a really amazing new world.

This is the world we live in today. This is the world you must learn your mathematics in. Just imagine how this will impact your STEM studies. One last example. . .

WA14 Parametric Plot $(15(t - \sin(t)), 15(1 - \cos(t)))$ from $t = 0$ to 2π

This is the famous Cycloid. You may learn all about it at:
<http://en.wikipedia.org/wiki/Cycloid>



The cycloid through the origin, generated by a circle of radius r , consists of the points (x, y) , with:

$$x = r(t - \sin t)$$

$$y = r(1 - \cos t)$$

where t is a real [parameter](#), corresponding to the angle through which the rolling circle has rotated, measured in [radians](#).

C21E

Parametric Functions

1. Given the function $x = y^4$, plot the parametric function using t as an independent variable, from $-2 < t < 2$.
2. Given the function $x = y^4 + 3y^3 - 10y^2$, plot the parametric function using t as an independent variable, from $-6 < t < 6$.
3. Given the function $x = e^{y^2} - e^{3y}$, plot the parametric function using t as an independent variable, from $-10 < t < 10$.
4. Given the function for a circle $x^2 + y^2 = r^2$ where $r=5$, plot the parametric function using t as an independent variable, from $t = 0$ to 2π .
5. Given the function for a circle $x^2 + y^2 = 9$, plot the parametric function using t as an independent variable, from $t = 0$ to 2π .
6. Given the function for an ellipse $x^2/9 + y^2/4 = 1$, plot the parametric function using t as an independent variable, from $t = 0$ to 2π .
7. Given the function for an ellipse $x^2 + y^2/16 = 1$, plot the parametric function using t as an independent variable, from $t = 0$ to 2π .
8. Plot the following functions as a parametric function: $f(t) = t - \sin(3t)$, $g(t) = t + 3\cos(4t)$ from $-3 < t < 3$.
9. Plot the following functions as a parametric function: $f(t) = t^2 - \sin(t)$, $g(t) = t + 3\sin(3t)$ from $-5 < t < 5$.
10. Plot the following functions as a parametric function: $f(t) = 2t^2 - 3\sin(t)$, $g(t) = t + 3\sin(3t)$ from $-5 < t < 5$.

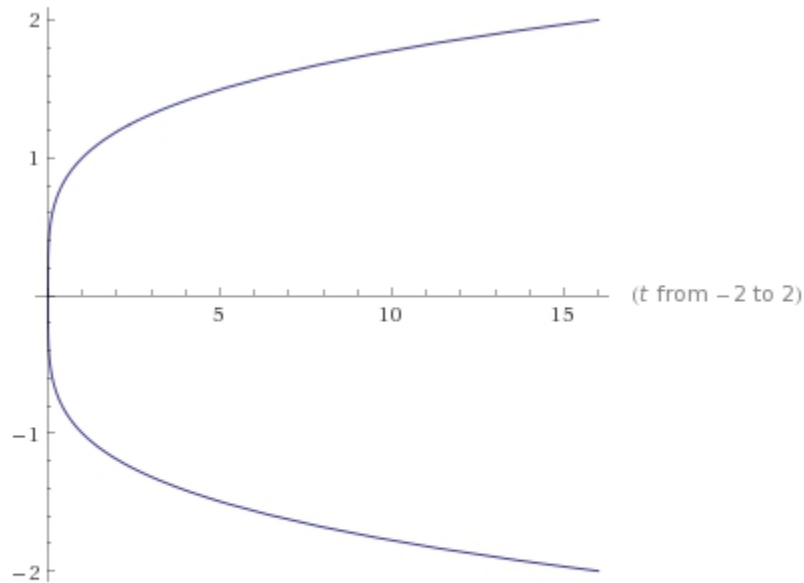
C21EA

Parametric Functions

1. Given the function $x = y^4$, plot the parametric function using t as an independent variable, from $-2 < t < 2$.

WA parametric plot (t^4, t) from $-2 < t < 2$

Parametric plot



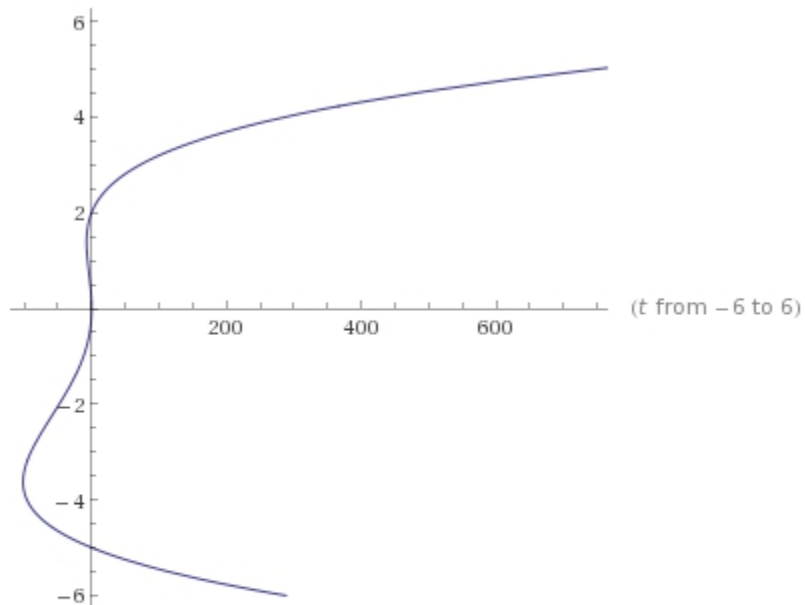
Arc length of parametric curve:

$$\int_{-2}^2 \sqrt{1 + 16t^6} dt = {}_4F_1\left(-\frac{1}{2}, \frac{1}{6}; \frac{7}{6}; -1024\right) \approx 33.2937$$

2. Given the function $x = y^4 + 3y^3 - 10y^2$, plot the parametric function using t as an independent variable, from $-6 < t < 6$.

WA parametric plot ($t^4 + 3t^3 - 10t^2, t$) from $-6 < t < 6$

Parametric plot:



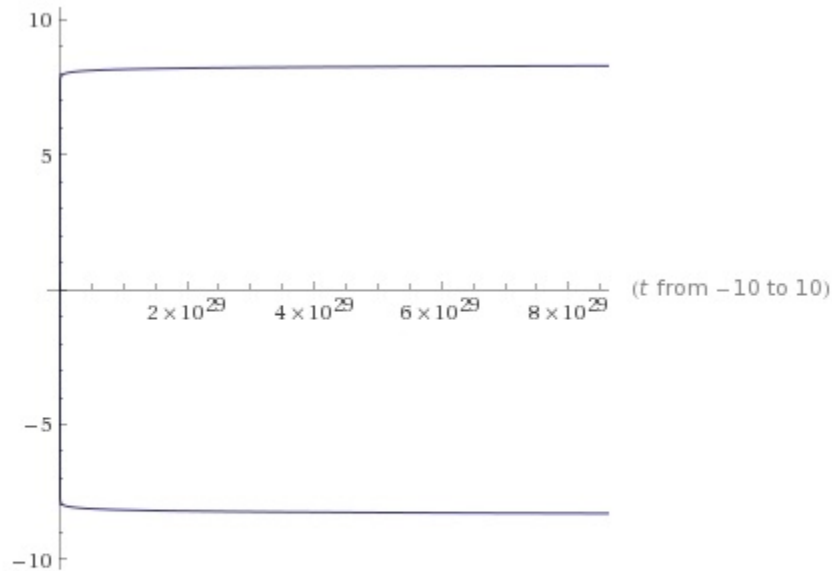
Arc length of parametric curve:

$$\int_{-6}^6 \sqrt{1 + t^2 (-20 + 9t + 4t^2)^2} dt \approx 2090.809\dots$$

3. Given the function $x = e^{y^2} - e^{3y}$, plot the parametric function using t as an independent variable, from $-10 < t < 10$.

WA parametric plot ($e^{(t^2)} - e^{(3t)}, t$) from $-10 < t < 10$

Parametric plot:



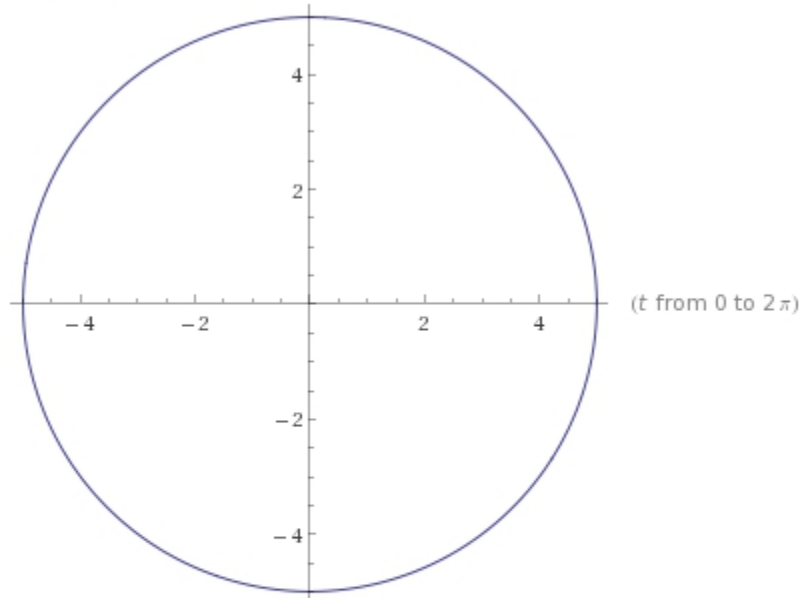
Arc length of parametric curve:

$$\int_{-10}^{10} \sqrt{1 + (3e^{3t} - 2e^{t^2}t)^2} dt \approx 5.37623428363228211272302579853900 \times 10^{43} \dots$$

4. Given the function for a circle $x^2 + y^2 = r^2$ where $r=5$, plot the parametric function using t as an independent variable, from $t = 0$ to 2π .

WA parametric plot (5cos(t),5sin(t)) from t =0 to 2Pi

Parametric plot



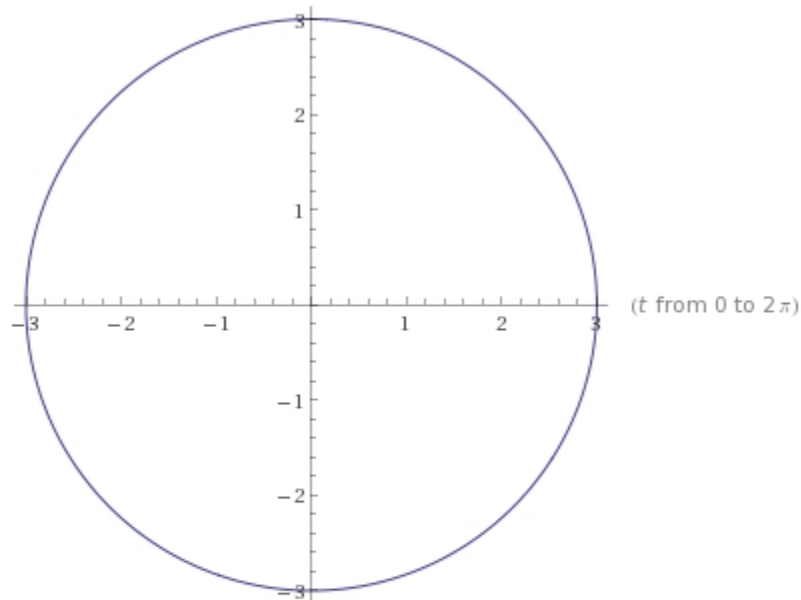
Arc length of parametric curve:

$$\int_0^{2\pi} 5 dt = 10\pi \approx 31.4159$$

5. Given the function for a circle $x^2 + y^2 = 9$, plot the parametric function using t as an independent variable, from $t = 0$ to 2π .

WA parametric plot ($3\cos(t), 3\sin(t)$) from $t = 0$ to 2π

Parametric plot



Arc length of parametric curve:

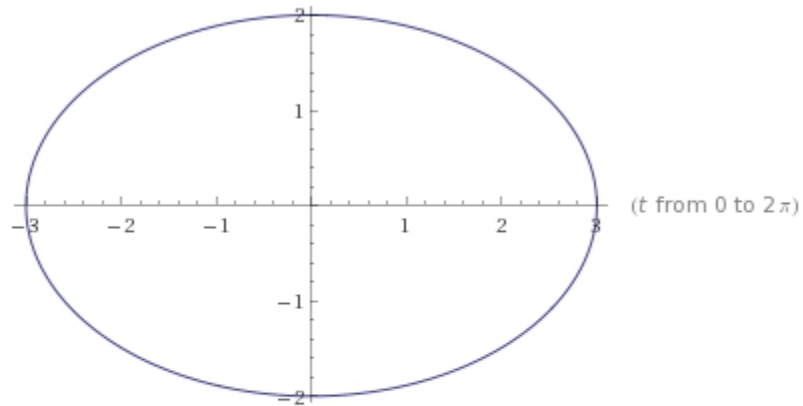
$$\int_0^{2\pi} 3 \, dt = 6\pi \approx 18.8496$$

6. Given the function for an ellipse $x^2/9 + y^2/4 = 1$, plot the parametric function using t as an independent variable, from $t = 0$ to 2π .

$$x^2/9 + y^2/4 = 1, \text{ or } x^2/3^2 + y^2/2^2 = 1$$

WA parametric plot (3cos(t), 2sin(t)) from t = 0 to 2Pi

Parametric plot



Arc length of parametric curve:

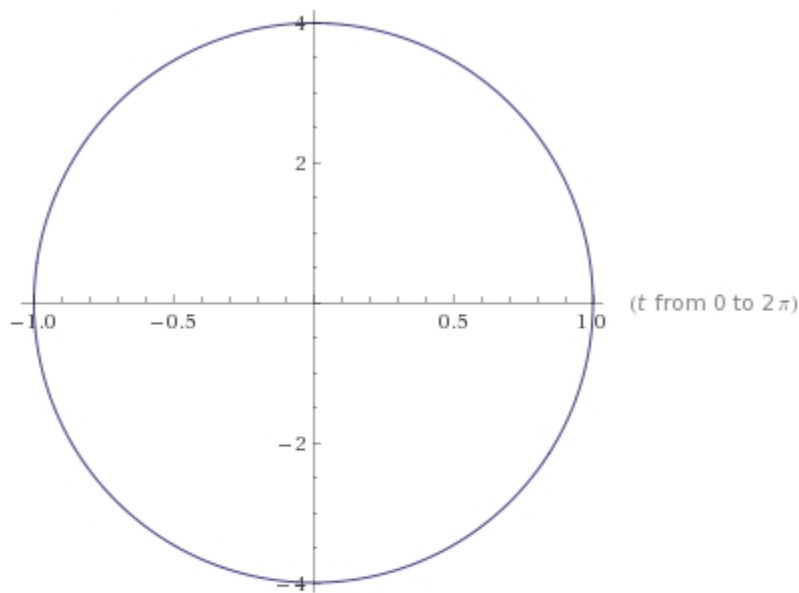
$$\int_0^{2\pi} \sqrt{4 \cos^2(t) + 9 \sin^2(t)} dt = 8 E\left(-\frac{5}{4}\right) \approx 15.8654$$

7. Given the function for an ellipse $x^2 + y^2/16 = 1$, plot the parametric function using t as an independent variable, from $t = 0$ to 2π .

$$x^2 + y^2/16 = 1, \text{ or } x^2/1^2 + y^2/4^2 = 1$$

WA parametric plot ($\cos(t), 4\sin(t)$) from $t = 0$ to 2π

Parametric plot



Arc length of parametric curve:

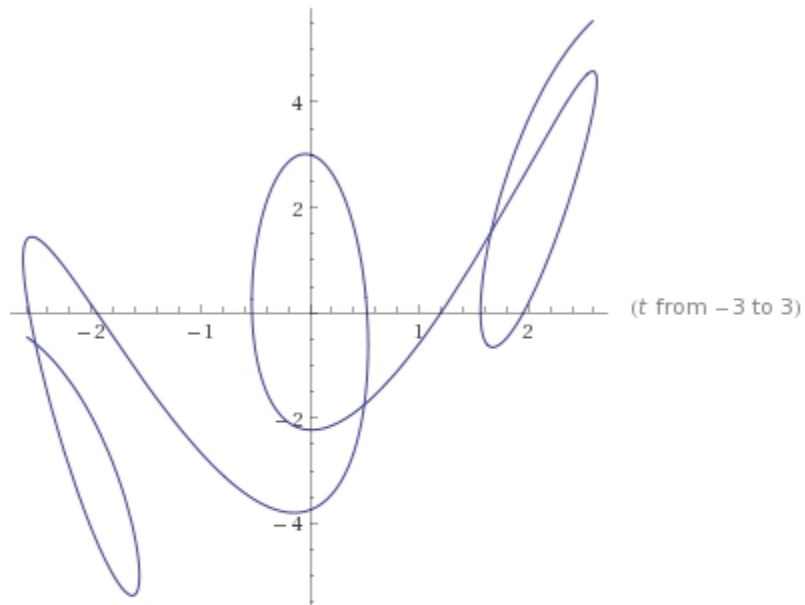
$$\int_0^{2\pi} \sqrt{16 \cos^2(t) + \sin^2(t)} dt = 16 E\left(\frac{15}{16}\right) \approx 17.1568$$

Note the different scales WA used for the x-axis and y-axis. That's why it looks like a circle.

8. Plot the following functions as a parametric function: $f(t) = t - \sin(3t)$, $g(t) = t + 3\cos(4t)$ from $-3 < t < 3$.

WA parametric plot ($t - \sin(3t)$, $t + 3\cos(4t)$) from $-3 < t < 3$

Parametric plot:



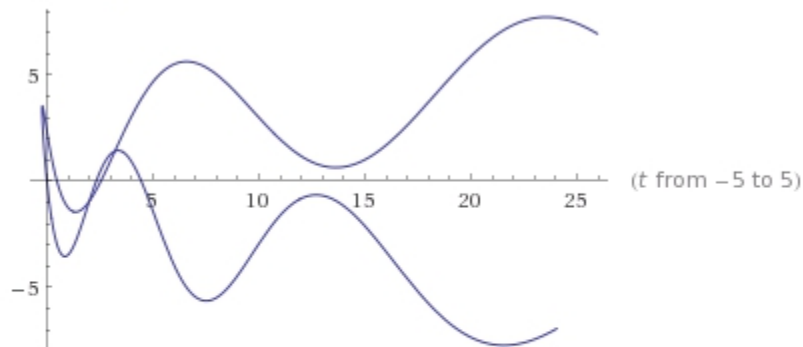
Arc length of parametric curve:

$$\int_{-3}^3 \sqrt{(1 - 3 \cos(3t))^2 + (1 - 12 \sin(4t))^2} dt \approx 49.64078229\dots$$

9. Plot the following functions as a parametric function: $f(t) = t^2 - \sin(t)$,
 $g(t) = t + 3\sin(3t)$ from $-5 < t < 5$.

WA parametric plot ($t^2 - \sin(t)$, $t + 3\sin(3t)$) from $-5 < t < 5$

Parametric plot



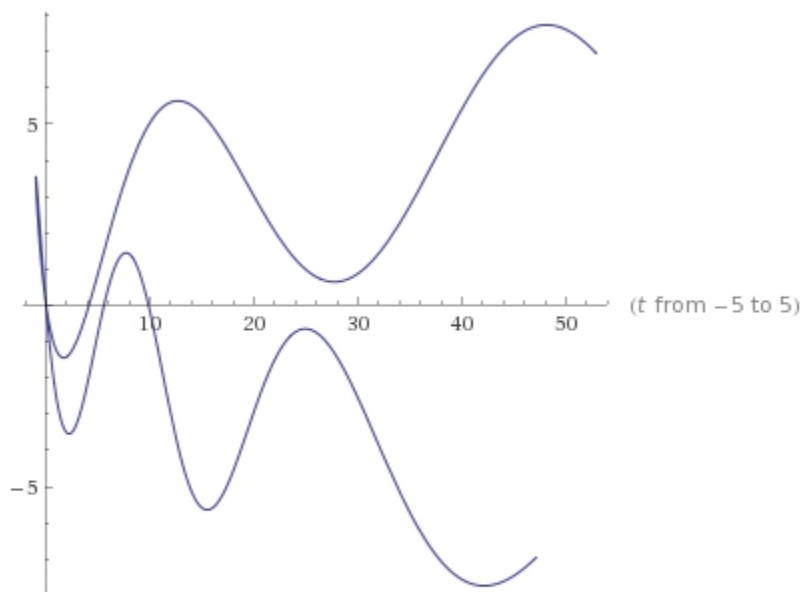
Arc length of parametric curve:

$$\int_{-5}^5 \sqrt{(-2t + \cos(t))^2 + (1 + 9\cos(3t))^2} dt \approx 81.8744\dots$$

10. Plot the following functions as a parametric function: $f(t) = 2t^2 - 3\sin(t)$, $g(t) = t + 3\sin(3t)$ from $-5 < t < 5$.

WA parametric plot ($2t^2 - 3\sin(t)$, $t + 3\sin(3t)$) from $-5 < t < 5$

Parametric plot



Arc length of parametric curve:

$$\int_{-5}^5 \sqrt{(4t - 3\cos(t))^2 + (1 + 9\cos(3t))^2} dt \approx 123.6700\dots$$